

ST HELENS COLLEGE

T Levels • Vocational • Apprenticeships

2024
School Leaver
Prospectus



St Helens College

Year 10 and 11 Open Events



Our students often say to us that they found an Open Event incredibly helpful when deciding what to do after school. Take their advice and join us at one of our Open Events!

Meet our tutors, tour our campuses and discover more about our wide range of courses and student life.

2023

Wednesday 11th October
5pm-7pm

2023

Wednesday 22nd November
5pm-7pm

2024

Wednesday 31st January
5pm-7pm

2024

Wednesday 13th March
5pm-7pm

Welcome



Welcome to St Helens College, a place to discover who you are and what you are capable of.

It all began over 120 years ago when we very first opened our doors to our students and we have been inspiring minds and building futures ever since.

Building on our strong heritage, we have invested millions in our Town Centre and STEM Centre Campuses, to give you the ultimate student experience.

We have produced thousands of successful students that have gone on to achieve spectacular things. This includes our inspirational Connecting Classroom to Career Ambassadors (you'll find them inside this prospectus).

So whatever your background, ambitions and interests, we have hundreds of courses to suit you and how you would like to learn. You could choose from a range of T Levels, vocational courses or an apprenticeship, all designed to help you achieve your dream career.

If that isn't enough, our teaching experts come with a hefty amount of industry experience, and our strong employer links enhance your learning, connecting the classroom to your career.

So what can St Helens College possibly have to offer you that no other college can?

Well, take a look inside and let us show you.



Contents

INTRODUCTION

Welcome	1
Your Student Experience	4
Explore Our Campuses	6
Real Students, Real Stories	10
Industry Experts	12
Work Experience	13
Supporting You	14
Additional Learning Support	15
Financial Support	16
Travelling to College	18
Safeguarding and Wellbeing	20
Key Information for Parents /Carers	21
Supported Internship	22
Inclusive Learning	23
Directions	24
Prince's Trust	25
Growing Industries	26
English and Maths	28
How Do You Want to Learn?	29
T Levels	30
Discover Vocational	32
Discover Apprenticeships	34

T LEVELS VOCATIONAL COURSES APPRENTICESHIPS

Animal Management	40
Art and Design	42
Beauty, Nails and Makeup	46
Business	50
Catering and Hospitality	52
Computing and IT	58
Construction	60
Creative Media	68
Early Years	70
Engineering	72
Games, Animation and VFX	76
Graphic Design	80
Hairdressing	82
Health and Social Care	84
Motor Vehicle	88
Music Production	90
Performing Arts	92
Photography	94
Public and Uniformed Services	96
Science	98
Sport and Fitness	100
Travel and Tourism	102

OPEN EVENTS

Inside
front cover

NEXT STEPS

Inside
back cover

Your Student EXPERIENCE

Life at St Helens College is so much more than studying... you'll discover new places, share amazing experiences with your friends and develop skills and interests that you thought you never had. You will even have the opportunity to take part in activities and fundraising events to boost your CV or UCAS application!

Trips and Travel

You will have lots of opportunities to go on exciting trips in the UK and overseas. Whether it is having outdoor adventures with the National Citizen Service (NCS) or visiting popular cities, you'll make amazing memories!



Charity Fundraising Initiatives

Each year, staff and students across all campuses take part in fundraising activities to raise money for local and national charities including; Red Nose Day, Christmas Jumper Day, Brave the Shave, Children In Need, Macmillan Cancer Support and Superhero Day.



Student Council

Students are nominated as a course representative and have the opportunity to take part in conferences throughout the year and work with College management to communicate ideas and contribute to important decisions.

Student Governors

Each year, the College's Board of Governor's appoints a student as a Student Governor. This role involves representing the student body, attending monthly meetings with College management including the Principal and also supporting the College's marketing and events team with exciting projects!



Guest Speakers and Industry Insight

There are plenty of opportunities to hear from guest speakers and industry professionals related to your course area. You will gain first-hand experience, insight and advice and will also have the chance to take part in masterclasses and activities to leave you feeling inspired.



Work Experience and Volunteering

Experience is key to securing your dream career. That is why we work closely with both local and regional organisations to provide you with industry placements and volunteering opportunities to develop your skills and experience.



Competitions

Many of our students have had the opportunity to showcase their skills at regional competitions such as WorldSkills UK, HIP Learner of the Year, and the Association of Hairdressers and Therapists (AHT), with some making it through to the National Finals!



Increase your chances of employment with The Duke of Edinburgh's globally recognised award. Learn how to become a team player and a leader and gain the desirable skills that employers are looking for! Develop life long skills, increase your confidence and build resilience, ready to take on new challenges.

Explore Our Campuses

Town Centre Campus



Water Street, St Helens, WA10 1PP

STEM Centre Technology Campus



Pocket Nook Street, St Helens, WA9 1TT

We have spent a lot of time and resources making sure that you have everything you need to get the most out of your experience with us.

It may not look like it from the outside, but our two campuses have everything from a fine dining restaurant and mock aircraft cabin, to a construction site and outdoor animal units. We even have our own Starbucks!

As an added bonus, we are right on the doorstep of a busy town centre, where you'll have access to lots of shops, restaurants and cafes. So we are sure you'll have plenty of things to do to keep yourself busy around your studies.

**New for September 2023!
Green Energy Skills Centre**

See page 65 for more details.



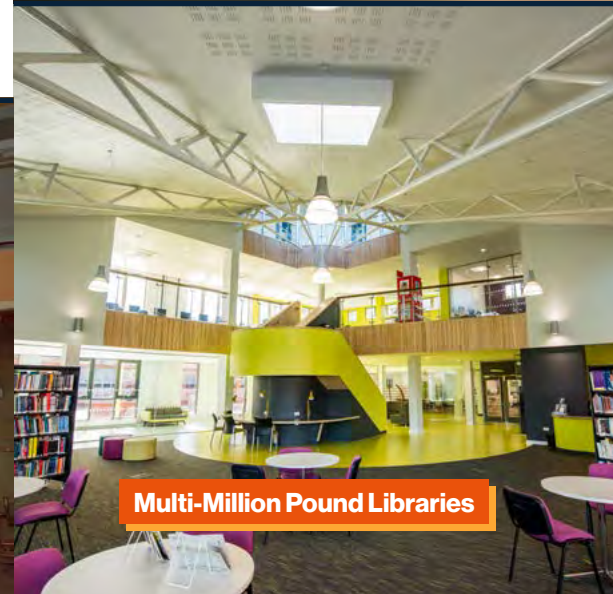
Proudly Serving **STARBUCKS®**



Construction Sites



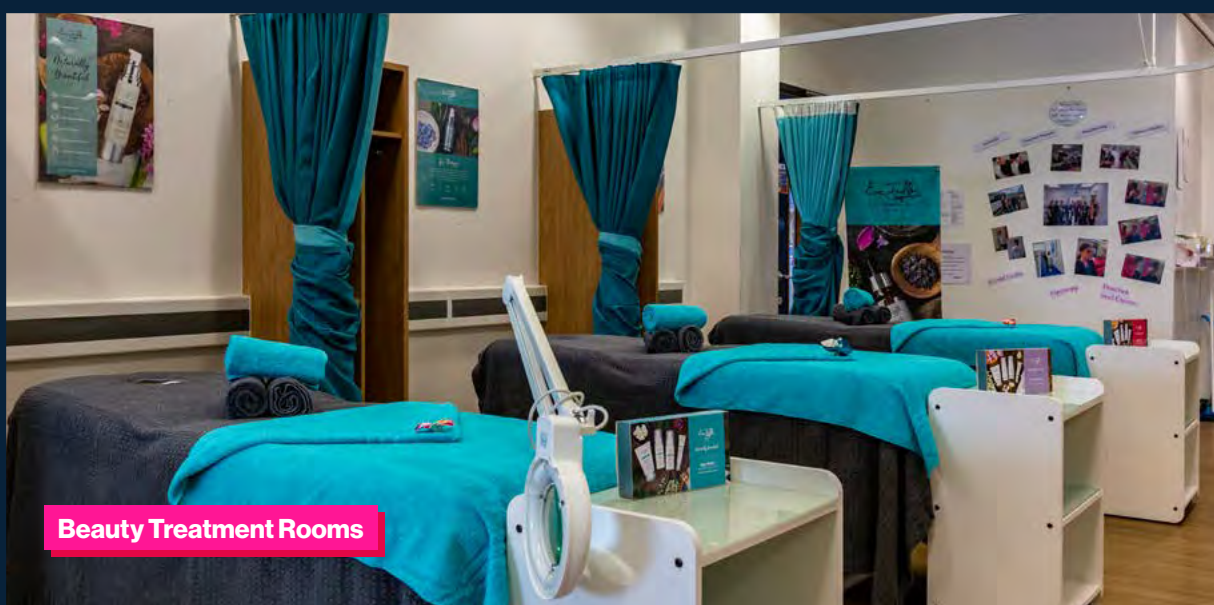
Award-Winning Restaurant and Kitchens



Multi-Million Pound Libraries



**£1m Centre
for Precision Engineering**



Beauty Treatment Rooms



Indoor and Outdoor Animal Units

Including an Aviary and Dog Grooming Salon



The Gym



Mock Aircraft Cabin



Commercial Salon, The Lounge



Ofsted Outstanding Nursery



Automotive Hub

MOT Bay



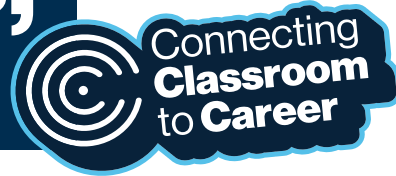
Live Recording Suite and TV Studios

Including Chroma-Key Infinity Cove and Editing Suites



Colour and Monochrome Dark Room

Real Students, Real Stories



We are exceptionally proud of our students and all that they achieve. Whether they progress into employment (paid or voluntary), on to university or secure an apprenticeship, we celebrate their successes and like to keep in touch, even years after they've left College!

★ Level 3 Early Years students and best friends, Katie, Lauren, Sophie and Millie. ☒



A* and A grade students, Katie and Lauren are progressing to Edge Hill University to study primary education. They both aspire to be Primary School Teachers in the future.

Millie and Sophie, who also proudly achieved a grade A, are keen to continue working in the sector, with Millie securing employment with Little Einstein's Nursery as a Nursery Practitioner and Sophie with her sights set on becoming a Teaching Assistant.



Ben

Classroom

Level 3 Extended Diploma in Music Production

Career

Aspiring Music Producer

Joined us from

Cowley International College

"I love studying alongside people who share similar interests and learning from tutors who are active professionals in the industry. In my spare time, I mix my own music and have just achieved a Distinction grade for my first year. I am looking forward to continuing my studies."



James

Classroom

Level 3 Advanced Diploma in Professional Cookery

Career

Pastry Chef De Partie at Panoramic 34

Joined us from

Cowley International College

"I loved developing my skills in the College's Colours Restaurant. Working in a real kitchen, contributing to menu designs and receiving feedback from real customers gave me the experience I needed to gain a role at one of Liverpool's finest restaurants, Panoramic 34."



Sylvia

Classroom

Level 3 Extended Diploma in Health and Social Care

Career

Aspiring Doctor

Joined us from

St Ignatius College Secondary School (Malta)

"I've really enjoyed my College experience and have made some great friends. I also had the opportunity to undertake a work placement with Whiston Hospital, working across various departments. I have since secured employment as Bank Staff there, whilst I work towards going to university."



Harry

Classroom

Level 3 Extended Diploma in Mechanical Engineering

Career

Mechanical Engineering Apprentice at Flamco UK Ltd

Joined us from

Hope Academy

"I've always struggled with classroom learning, but my tutors always say that I am skilled with practical work, so an apprenticeship is the perfect route for me. I'm hoping to progress on to a HNC in Engineering."



Chloe

Classroom

Level 3 Extended Diploma in Uniformed Protective Services

University

Criminology at Liverpool Hope University

Joined us from

St Cuthbert's Catholic High School

"I am so proud to have achieved D*D*D* on my course. I've loved every minute, especially the amazing trips we got to go on and taking part in the fitness modules. The tutors are so supportive too and have amazing industry links. I feel ready to go to university."

Industry Experts



LYNSEY
Animal Management

"With over 25 years experience in the industry, I have worked with a vast range of animal species. I studied at St Helens College before starting my career as Zoo Keeper at Blackpool Zoo. I have returned to the College to share my knowledge with the next generation of animal carers."



MILES
Construction

"I started my career as an Apprentice Joiner at the age of 16 and have over 20 years experience as a Site Manager, working on residential builds. I am passionate about sharing my knowledge and experience across all construction trades."



JADE
Beauty Therapy

"I have been a qualified Beauty Therapist in the industry since the age of 15 and have worked in both salon and spa environments, completing training with top beauty brands including ESPA, Jessica, Young Nails and CND."



ASHLEY
Art and Design

"I have worked in the field of textiles and surface pattern design for 14 years. I draw inspiration from culture and my travels around the world. I enjoy sharing my passion and skills with my students."



GRANT
Uniformed Services

"I fought for my country on the front line and trained officers in the Royal Navy. I instil my British values, discipline and motivation in my students every day and I'm proud of what they achieve."



RACHEL
Early Years

"I strive to make a difference and provide students with access to an excellent education. I love to create amazing experiences for my students such as working on big events with local childcare providers in the community."

Work Experience

As part of your level 2 or level 3 study programme, you will complete a minimum of 30 hours work experience related to your studies.

As well as boosting your CV, work placements are a chance for you to find out more about your career goals and interests, meet new people, find out what inspires you, develop your skills and discover your strengths.

We encourage students to gain work experience independently and start looking for opportunities as soon as they start their course in September. If you are struggling to find a placement that is suited to your career aims, our team of dedicated Work Placement Officers will be on hand to support you!



★ **Lilly**

Health and Social Care student, Lilly, completed her placement at Aintree University Hospital working as a Healthcare Assistant!

Lilly worked across a variety of wards, from blood and stroke clinics, to the assessment and rehabilitation day unit and the osteoporosis ward.



If you choose to study Early Years or Health and Social Care, you will be required to complete an enhanced DBS check prior to the start of your placement.



Supporting You

Your happiness, success and education is all that matters to us. Online, face-to-face, with friends or trained professionals, we will be there when you need us.

From helping you to prepare for employment, to providing support in the classroom, we are dedicated to helping you succeed.



Library Team

Our skilled and supportive staff can guide and assist you whether you need help finding a book, printing a document or navigating your way through the online library. We have a substantial collection of learning resources to support your studies. Our 24/7 library of online databases, journals and ebooks means that you can study at home or anywhere in the world (as well as on campus) at a time to suit you.

Careers Advice and Guidance

We offer free, confidential and impartial careers advice and guidance to help you understand how to progress towards your dream career. This can be anything from finding the right course, CV and personal statement support to job searching and interview techniques to help with UCAS applications.

Unifrog

Unifrog helps students find their future by bringing together all the available information into one, impartial, user-friendly platform. The platform supports students to make the best choices and submit the strongest applications. Visit www.sthelens.ac.uk/unifrog.

Progress Coaches

Students will be allocated a Progress Coach (PC) to guide and support them to maximise their opportunities to successfully achieve their programme of study, help them to achieve the best grades they can and support them to make positive progress to the next stage of study or employment.

Additional Learning Support

Our friendly and experienced Learner Support Team will work with you, your family, carers/guardians and your tutors to ensure you reach your full potential and achieve your career aspirations.

The team will provide recommendations based on your individual requirements/ Educational Health Care Plan to support you during your time at St Helens College.

The following support is available to you:

Assessment of individual needs (including exam access arrangements)

Liaison with local authorities, exam boards and course tutors

One-to-one skills development tutorials

In-class support from Learning Support Assistants

Access to specialist equipment

Communication support for British Sign Language and Sign Supported English users

Assistance with any personal care and healthcare needs

Mobility assistance

For more information about the support available to you, please get in touch with the team below:

Learner Support Manager

Anne
Telephone: **01744 623260**
Email: aignatius@sthelens.ac.uk

Specialist Support Tutors

Shelagh
Telephone: **01744 623124**
Email: sjmarchetto@sthelens.ac.uk

EHCP Co-ordinator

Hannah
Telephone: **01744 623124**
Email: houghton@sthelens.ac.uk

Carol
Telephone: **01744 623263**
Email: cwhittle@sthelens.ac.uk



Visit www.sthelens.ac.uk/learnersupport for more information

Financial Support

We want to make sure that you can make the most out of your college experience. So don't worry about the costs of coming to college – we have it covered.

All of our students aged **16-18** are entitled to:

1

Free Course Fees

You are entitled to free tuition, examination and registration fees.

2

Free Breakfast*

No more rushing around in the morning – you'll get a free breakfast at College!

3

Free Bus Travel

Receive a free bus pass for the academic year, which can be used during term time.

4

Free Microsoft Office 365

Usually worth over £100, you'll get the full Microsoft Office package for free!

5

Student Discounts

Don't miss out on the perks of being a student – you'll access lots of discounts.



You may also be entitled to additional financial help including:



Free College Lunch*

You may be entitled to a free lunch at any of St Helens College's catering outlets.



Free Childcare*

If you are a young parent, you may be entitled to help with the cost of childcare via our Care to Learn Scheme. We even have our own registered Ofsted 'Outstanding' nursery.



Free Kit and Equipment*

You could be entitled to up to £1,200 per College year to help with essential equipment, uniform, trips, and DBS checks, if required.

To find out if you could be entitled to additional financial support, please visit:

 www.sthelens.ac.uk/financialsupport

*Terms and conditions apply.

Travelling to College

Getting to St Helens College is easier than ever!

Our Town Centre and STEM Centre campuses are less than a 10-minute walk from the central bus station and train station, linking to routes across Cheshire, Merseyside, Greater Manchester and Lancashire.

By Bus

We provide a FREE Arriva bus pass for the whole academic year, which you can use every weekday during term time, including evenings. The bus pass is available to all 16-18 year-old St Helens College students, on a full-time course.



Plan your bus route to St Helens College:

www.arrivabus.co.uk



We have a free dedicated bus service, operating in Kirkby, every weekday, during term time.

For full bus route and times visit:

www.sthelens.ac.uk/freebus

By Train

St Helens Central train station is on the main line between Wigan North Western station and Liverpool Lime Street station.

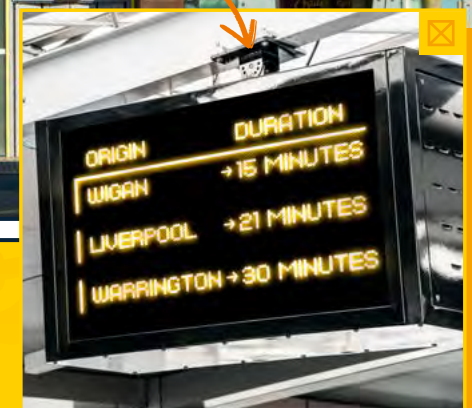


Plan your train route to St Helens College:

www.nationalrail.co.uk



St Helens Central Train Station



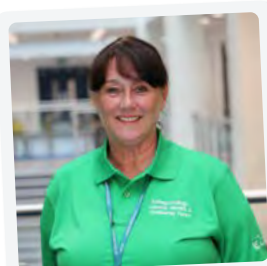


SAFEGUARDING & MENTAL HEALTH WELLBEING TEAM

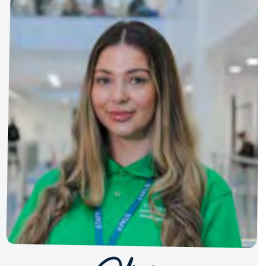
Our students are our priority.

Your wellbeing and safety at College is very important to us, which is why we have a dedicated wellbeing service for students who feel they need help or support with a range of mental health and emotional issues.

The College's Safeguarding, Mental Health & Wellbeing Team is available across all campuses, whenever you need to talk to someone. We also have a dedicated Chaplaincy Hub, which is a quiet, comfortable room, where you can rest, think, meditate or pray.



Jackie



Olivia



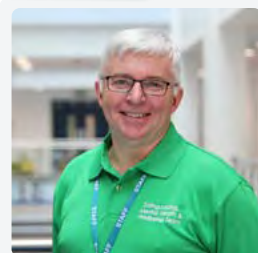
Jeanine



Sam



Lynda



James



Suzanne

As a College we aim to:

Ensure that every individual is respected and valued.

Provide an enjoyable, safe, supportive and caring environment, building confidence and providing excellent skills development for life and work.

Provide a supportive culture.

For more information, visit: www.sthelens.ac.uk/safeguarding

Key Information Parent/Carers

We know how important it is for your child to have a smooth transition from school to college and for you to be a part of that process.

We are wholeheartedly committed to ensuring that your child has access to the support they require to help them successfully achieve their qualifications and make plans for their future. The information below will hopefully answer any questions you may have, as a parent or carer, about your child starting College.

Monitoring Progress

All of our students are allocated a Progress Coach (PC) whilst they are studying with us and they will monitor their progress throughout to support them to achieve their full potential. If you have any questions, concerns or issues that you would like to discuss regarding their studies or their experiences in College, please do not hesitate to contact them directly. Their contact details will be provided on the first day your child starts College.

You will also have the opportunity to review your child's in year progress at any time by logging into our tracking system, ProPortal. Log-in details will be issued to you at the start of the academic year. This system enables you to view their attendance and punctuality and also review their achievement to date for academic progress. In addition to this, you will receive progress reports twice throughout the academic year highlighting their progress, such as target grades, attendance and punctuality.

Parent Welcome Event

The College's first Parent Welcome Event, which takes place in September, is a great opportunity for you to meet your child's tutors, ask questions and receive additional information about all aspects of their study programme including English and maths, if applicable. Further details will be provided via your child at the start of the academic year.

Parents' Evenings

We hold two Parents' Evenings throughout the academic year, to keep you fully informed about your child's progress, including any target areas that will help and support them to improve. Information regarding dates and times will be provided at the start of the academic year.

Parent Voice

We value and appreciate your feedback regarding your child's experience at College, and view it as a crucial opportunity to evaluate and improve the quality of education, care, and support for our students.

Visit our dedicated parent section for more information:

www.sthelens.ac.uk/parent-carer

Supported Internship

The Supported Internship Programme is a partnership between St Helens College and St Helens Council, aimed at giving young people, aged 16-25 with an Educational Healthcare Plan (EHCP), the opportunity to gain valuable work experience, which will support their aspirations towards future employment or voluntary work.

Students will participate in an extended work placement with the support of a Job Coach, mock interviews, industry visits and skills sector demonstrations. They will develop the practical and social skills needed to enter the workplace through the support of a Job Coach, with the end goal of achieving paid employment after the internship.

★ Hayden

"I loved attending College. It provided routine and I enjoyed making friends. Although the campus is big, I felt safe and my tutors were approachable, kind and always there to help. One of the best parts of the Supported Internship was completing a work placement with the College's Apprenticeship Team and going on days out to Liverpool. I am now ready to find employment."



For more information about the support available to you, please get in touch with the team ↓

Supported Internship Co-Ordinator
Email: siadmin@sthelens.ac.uk
www.sthelens.ac.uk/supportedinternship

Inclusive Learning

Our Inclusive Learning department is a friendly and nurturing environment, which supports young people with a wide range of learning difficulties and/or disabilities.

We want our students to be fully engaged in their own choices, possessing the ability to make informed and safe decisions about their future steps into independent living or work, as well as becoming active and productive members of the local and wider community.

During their time at College, students have the opportunity to develop their work skills including communication and teamwork along with life skills such as money management, cookery and safe travel.

They will follow an individualised programme of study including maths, English, OCR qualifications, interventions and work experience designed to meet their EHCP outcomes and their identified individual development.

Students will leave us with skills for life and an understanding of the importance of their physical and mental wellbeing. They will choose their pathway depending on their own goals for the future – Life Skills Pathway or Work Skills Pathway.



www.sthelens.ac.uk/inclusivelearning



Directions Course

Directions is a free course aimed at young people aged 16-18, who aren't sure what they would like to study, have struggled in education in the past or haven't decided what career they would like in the future. With our multiple pathways, you will gain a level 1 employability qualification and improve your English and maths skills.

You may also have the opportunity to gain valuable work experience and sample some of our vocational courses to explore what you might like to study. Directions has various start dates throughout the year and can take 12 weeks to a year to complete with a view to continuing your studies on a full time course for the rest of the year.

★ Maddison

"I joined Directions because I wasn't sure what I wanted to do with my life, and I was also struggling with my mental health alongside having autism. The tutors were incredible - so supportive and nurturing and gave me the confidence and self-esteem to sample different courses to see what I enjoyed. Through doing this, I found my passion for catering and have just completed the Level 1. Autism is not a barrier to me achieving my goals - I am proud of everything I have achieved so far!"



For more information about the support available to you, please get in touch with the team ↓

Maxine

Telephone: 07771 810 900 / 01744 623140

Email: mjones2@sthelens.ac.uk

The Prince's Trust

Improve your confidence, gain work experience and get back into education or employment with this free, 12-week employability and personal development programme.

You will gain a nationally recognised qualification which is held in high regard by employers. Over the last five years, three in four young people supported by The Prince's Trust moved into work, education or training.

This programme is available to anyone aged 16-30 and there are many start dates throughout the year.



Prince's Trust



For more information, get in touch with the team



Team Leader

Jade

Telephone: 07771 938 479

Email: jcotter@sthelens.ac.uk



Visit www.sthelens.ac.uk/princes-trust for more information

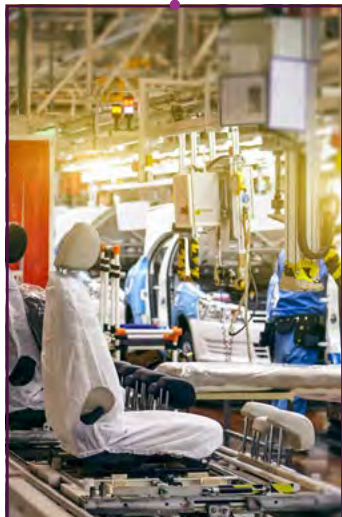
Growing Industries

As the economy of Liverpool and the wider Merseyside area grows, we ensure that our students have access to opportunities across innovative growth sectors.

Through strategic partnerships and relationships with key organisations and employers we will focus on key specialisms, sectors and emerging technologies in the region. These areas include:

Manufacturing

Manufacturing is vital to the local and regional economy, which is home to some of the UK's largest companies including Jaguar Land Rover, Unilever and Astra Zeneca. It provides over 50,000 jobs and is also responsible for 15% of the UK's annual car production!



Warehousing and Logistics

Due to significant growth in online purchasing, businesses are having to respond rapidly to the changes in customer demand and behaviour, which means attracting skilled workers is a priority!

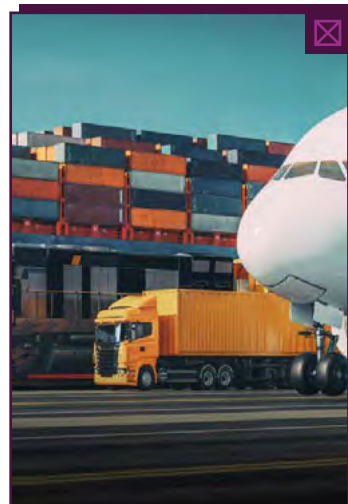
8,000 new jobs over the next 15 years.

Freeport

Freeports are designated areas within the UK's borders, which aim to create economic activity such as trade, investment, and jobs. Liverpool's freeport handles 45% of the UK's trade from the United States and is the UK's biggest western facing port! 10,000 jobs are set to be created with the development of 3MG in Widnes, Parkside in St Helens and Wirral Waters.

Green Jobs and Skills

There are lots of green jobs available to support the Liverpool City Region's commitment to net zero carbon by 2040. This includes retrofitting, offshore wind energy and electric charging points.



Construction

The construction industry continues to grow at a rapid rate and skilled workers are in high demand across all trades, especially within green technologies such as geothermal heating and solar power. 266,000 workers are needed by 2026 to meet expected UK growth.

Health and Life Sciences

Liverpool accommodates more specialist hospitals and health centres than any other UK city outside of London, which means there are plenty of job opportunities to take advantage of. Research and innovation are central to activities locally, especially with the recent £90m investment in the Speke Pharma cluster – home to one of the UK's leading regions for bioprocessing. This could deliver 4,000 jobs, across Liverpool, Runcorn, St Helens, Maghull and Prescot over the next 5 years!



Professional and Business Services

The Liverpool City Region has a well-established professional services community with specialisms in financial services and wealth management. This sector generates more than £4.2bn per year in economic activity and leadership, management and digital skills are in high demand.

This sector supports an estimated **93,000** jobs across **12,000** companies.

Early Years and Childcare

Due to the increase of funding and support available for parents of younger children, many early years and childcare providers will need to expand the availability of their provision to meet demand, leading to lots more job opportunities within this sector.

Visitor Economy

The Liverpool City Region's visitor economy is thriving and as a result of the work to further grow the sector, there are lots of opportunities available within retail, tourism and hospitality!

The new Shakespeare North Playhouse in Knowsley, which opened its doors in July 2022, is estimated to attract more than 100,000 new visitors to the Liverpool City Region each year and boost the city region economy by £5.3million each year.



English and Maths



Achieving a good standard of English and maths is a key requirement for many jobs, as well as for courses you may wish to progress on to. These skills can also mean higher earnings in the future!

If you achieve below a grade 4 in your English and maths GCSEs, you will be required to study English and maths as part of your study programme, alongside your chosen subject. But don't worry - we have a friendly and experienced team who will provide support with everything from learning labs and revision sessions to online resources.

It may even be that you already have a grade 4 or above in these subjects but wish to achieve a higher grade. We can also support you to do this too!

How Do You Want to Learn?

There are lots of opportunities available to you when you finish your GCSEs and we know it can be difficult deciding what to do.

At St Helens College, we have options to suit all students depending on how you like to study, and what you want to do in the future.

T Levels

Are you academically strong with a specific career in mind?

Designed by employers, T Levels combine practical and theoretical learning with real-life industry experience. You'll spend 80% of your time in College and 20% on a 45-day industry placement to experience having a real career while you continue your studies. See page 30 for more information.

Vocational / Technical & BTECs

Do you prefer to learn in a practical, hands-on way?

Working in a practical, hands-on way, you will complete coursework alongside assessments, specialising in one subject. These types of courses are great if you know what you want to do in the future. See page 32 for more information.

Apprenticeships

Would you prefer to learn on-the-job whilst earning a wage?

With an apprenticeship, you'll spend 20% of your time in College, learning the theory behind your qualification and 80% with an employer in the workplace, earning a salary and developing job-specific skills. See page 34 for more information.



University



Employment



More Training

T-LEVELS

THE NEXT LEVEL QUALIFICATION

If you are academically strong and have a career in mind, T Levels are a great option for you. They are two-year qualifications, designed by leading businesses and employers to give you a head start towards your career!

T Levels are an alternative to A levels, BTECs and apprenticeships and include a 45-day industry placement. They carry the same amount of UCAS points as three A levels. You could choose to progress on to university, into employment or on to a higher/degree apprenticeship.

WHY CHOOSE T-LEVELS

80% COLLEGE 20% PLACEMENT

You'll spend 80% of your time in College and 20% on a 45-day placement with an employer, gaining amazing experience.

1 T LEVEL = 3 A LEVELS

1 T Level is equivalent to 3 A levels, which means you can progress to university, employment or a higher/degree apprenticeship!

BACKED BY BUSINESSES

T Levels have been designed with leading businesses and employers to give you the knowledge and skills you need to succeed.

WHAT T-LEVELS ARE AVAILABLE AT ST HELENS COLLEGE? ↴

COURSE AREA	T LEVEL	ENTRY REQUIREMENTS
Animal Care	Animal Care and Management (see page 41)	5 GCSEs at grade 4 or above including English language, maths and science.
Building Services Engineering	Electrotechnical Engineering (see page 63)	5 GCSEs at grade 4 or above including English language, maths and science.
	Plumbing and Heating Engineering (see page 65)	5 GCSEs at grade 4 or above including English language, maths and science.
Business and Administration	Management and Administration (see page 51)	5 GCSEs at grade 4 or above including English language and maths.
Design and Development for Engineering and Manufacturing	Electrical and Electronic Engineering (see page 74)	5 GCSEs at grade 4 or above including English language and science, and a grade 5 in maths.
	Mechanical Engineering (see page 74)	5 GCSEs at grade 4 or above including English language and science, and a grade 5 in maths.
Digital	Digital Support Services (see page 59)	5 GCSEs at grade 4 or above including English language and maths.
Education and Childcare	Early Years Educator (see page 71)	5 GCSEs at grade 4 or above including English language and maths and a clear DBS.
Health	Supporting the Adult Nursing Team (see page 85)	5 GCSEs at grade 4 or above including English language, maths and science.

FAQ's

Do I have to find the industry placement? ↴

We'll do this together! We'll support you to find and secure your industry placement to ensure it matches your career aspirations and aligns to your T Level route. We already have great relationships with local and regional employers, which means you'll get the most out of your work experience.

What support is available? ↴

You will be fully supported by your course tutor and progress coach throughout your studies including access to the College's dedicated safeguarding and mental health wellbeing team.

What's the difference between a T Level and an apprenticeship? ↴

Apprenticeships are paid work, suitable for students who know what occupation they want to pursue and wish to train 'on the job' (80% in the workplace, 20% off the job). T Levels are largely classroom based, with a significant industry placement (80% in the classroom, 20% in the workplace).

What can a T Level lead to? ↴

T Levels can lead to university, a higher/degree apprenticeship or employment!

Why have T Levels been developed? ↴

T Levels are a big part of the Government's plan to transform education in the UK. They will create a new generation of highly skilled workers that the UK needs for its future economy to be successful.

STUDENT STORIES

Open your camera and hover over the QR code below to listen to students' T Level stories!



SCAN ME

**TAKE
YOUR FUTURE
TO THE
NEXT T-LEVEL!**

Discover Vocational

You will have probably heard the word 'vocational', 'technical', or 'BTECs' thrown around a lot, and are wondering what it all means.

Well, vocational, technical or BTEC, refers to one or two-year courses that allow you to choose one subject, to study full-time. The best part about these courses is that they are very practical, hands-on and enable you to spend lots of time learning the skills needed to be successful in your chosen career.

They are also entirely misunderstood! Many assume that vocational courses are not as valuable as A levels but this is completely untrue. They can still give you the opportunity to go to university, complete an apprenticeship or secure employment. Some provide the same amount of UCAS Tariff Points as A levels, with Russell Group universities accepting BTECs as entry qualifications.



The Complete Vocational Package

Alongside your vocational course, you will complete valuable work experience in your chosen industry, receive one-to-one support in tutorials and participate in enrichment activities. Also, if it is required, you will study GCSE English and/or maths alongside your course.



Visit www.sthelens.ac.uk/vocational for more information

Learn Practically

1

Exceptional Progression

We have progression routes that lead to an apprenticeship, university or employment.

2

Enrichment Opportunities

Participate in workshops, masterclasses and activities to enhance your studies and student experience.

3

One Course, Full-Time

By focusing on one course, you will develop practical skills, knowledge and experience related to your career ambition.

4

Employability Skills

Develop key skills valued by employers such as communication, problem-solving, self-management and organisation.

5

Work Experience

Experience is key to securing your career. Take advantage of placements and live projects with employers in the industry.

6

Fantastic Facilities

Two multi-million-pound campuses boast realistic, commercial learning environments, with the best facilities as your classroom.

Discover Apprenticeships

Apprenticeships are a great way to develop your skills and experience on-the-job whilst gaining a recognised qualification. One of the many benefits is, you'll get paid to do it.

An apprenticeship is an actual job, meaning that you'll spend more time out in the workplace than in the classroom, learning and perfecting your skills. So, if you prefer to learn by doing, then an apprenticeship is a great place to start.

There are so many apprenticeships to choose from across a huge range of industries, so you will never be stuck for choice. Apprenticeships can take one to four years to complete, depending on which level you start at and the type of apprenticeship you choose. This means by the time you complete it, you'll know your job inside and out, and could have the chance to move up the career ladder.

Competition for apprenticeships is fierce, so get ahead of the competition by **downloading our essential guide!**

Learn about how you can benefit from an apprenticeship and the amazing opportunities it can lead to. Our guide includes top tips, an interview checklist, CV advice and most importantly, how to search and apply for an apprenticeship.

www.sthelens.ac.uk/essentialguide

Apprenticeships



APPRENTICESHIP
ESSENTIAL GUIDE 2024

St Helens College

KCC Knowledge Community College



Visit
www.sthelens.ac.uk/apprenticeships
for more information

Apprenticeship Choices

ANIMAL CARE

- Animal Care Technician

BUSINESS AND PROFESSIONAL

- Accounting (AAT) • Business Administration • Customer Service
- Management and Team Leading

COMPUTING AND IT

- Digital Support Technician

CONSTRUCTION

- Bricklaying • Carpentry and Joinery • Electrical Installation
- Painting and Decorating • Plastering • Plumbing and Gas Engineering
- Property Maintenance Operative

EARLY YEARS AND HEALTH

- Early Years • Health Care • Dental Nursing

ENGINEERING

- Electrical Engineering • Fabrication and Welding • Mechanical Engineering
- Manufacturing Engineering • Engineering Maintenance

MOTOR VEHICLE

- Autocare Technician • Heavy Vehicle Technician

SCIENCE

- Laboratory Technician

TEACHING ASSISTANT

- Teaching Assistant

Apprenticeship Entry Requirements

Level	Entry Requirements
2	Level 1 Functional Skills or GCSEs at grade 3 or above including English and maths.
3	Level 2 Functional Skills or GCSEs at grade 4 or above including English and maths.

★ Rebecca

Rebecca

“I have always loved discovering how things work and prefer to learn in a practical way, so when I had the opportunity to complete an engineering apprenticeship at Cheshire Seals and Components, I jumped at the chance. I hope to progress on to a HNC to continue developing my skills.”

Classroom: Level 3 Extended Diploma in Mechanical Engineering

Career: Mechanical Engineering Apprentice at Cheshire Seals and Components

Joined us from: Cowley International College

Earn While You Learn *WITH US*

1

Industry Choice

There are lots of apprenticeships available across a variety of roles and industries!

2

Largest Provider

Strong collaborations with local, regional and national employers, make us one of the largest apprenticeship providers in the Northwest.

3

Employer Partnerships

We work with hundreds of employers across the Northwest, providing an extensive range of apprenticeship vacancies.

4

Excellent Progression

Apprenticeship progression routes can lead to full-time employment, university or further study.

5

Dedicated Support

Each apprentice has their own assessor to monitor their progress and to provide support throughout their apprenticeship.

6

Industry Experts

St Helens College tutors are experts in their fields with specialist industry knowledge.

Employer Partnerships

We work with hundreds of employers across the Northwest, providing an extensive range of apprenticeship vacancies.

Our strong collaborations with local, regional and national employers, make us one of the largest apprenticeship providers in the area.



Visit www.sthelens.ac.uk/apprenticeships for more information

Parent FAQs

What is off-the-job training?

It is a statutory requirement for an apprentice to spend a minimum of 6 hours per week of their paid working hours 'off-the-job'. This time will be spent receiving training to gain the skills needed to complete their apprenticeship.

The 6 hours training can be delivered flexibly, by either the College or employer, as part of each day or one day per week and can either be remote learning or allocated time in the workplace. The employer and College will decide on the best model.

How can I tell if it is a good apprenticeship?

A high wage doesn't always mean that an apprenticeship is good. Look out for a role that is varied, has staff benefits, extra training opportunities as well as progression opportunities. All of the above shows the employer is looking to invest in the apprentice to develop them personally and professionally.

Financial support for apprentices?

Apprentices can benefit from various money saving schemes including:

- An NUS Apprentice Extra Card - the card costs £11 per year to set up but provides apprentices with massive discounts on high street and online retailers.
- A variety of travel discounts - apprentices aged 16-25 can apply for a railcard saving up to a third on train fares.
- A £1,000 bursary is available for care leavers aged 16-24, to help the transition into the workplace.

How much do apprentices get paid?

The current national minimum wage for an apprentice is £5.28 (as of April 2023) but this can vary depending on age and length of time on the programme. Any apprentices aged 19+, must be paid at least the National Minimum Wage rate for their age, after their first 12 months in their apprenticeship.

What apprenticeship levels are there?

There are various levels of apprenticeships that can be applied for, which are dependant on your current skills and qualifications. Apprenticeship qualifications are just as substantial as alternative study routes and can still provide entry to university, upon completion of a level 3 apprenticeship. See the below table for an explanation of apprenticeship equivalent levels:

Type	Level	Equivalent Education Level
Intermediate Apprenticeship	2	5 GCSEs (grades 9-4)
Advanced Apprenticeship	3	2 A levels, 4 AS Levels, Level 3 Diploma/Certificate
Higher Apprenticeship	4, 5, 6 and 7	Foundation, Bachelor's or Master's Degree
Degree Apprenticeship	6 and 7	Bachelor's or Master's Degree



Animal Management

If you have an interest in biological science and a passion for caring for animals, kick-start your career in this diverse and exciting industry.

Learn in our indoor and outdoor animal units, where you will work with over 50 different animal species, handling a huge variety of mammals, reptiles and other exotic creatures, maintaining their welfare and accommodation.

Many of our students have progressed on to university, have secured employment in the industry or have even launched their own successful business.



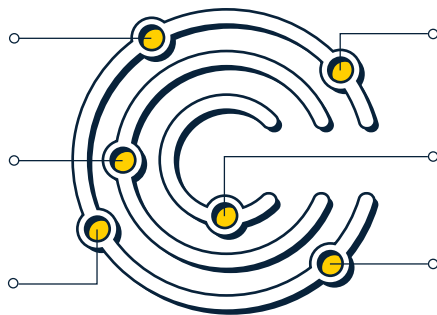
Visit www.sthelens.ac.uk/animal for more information

Connecting Classroom to Career

Veterinary Nurse
£18k - £26k+

Gamekeeper
£19k - £28k

Zoologist
£18k - £48k



RSPCA Inspector
£19k - £30k

Animal Care Worker
£14k - £24k

Dog Groomer
£13k - £20k

*Salary data collected from various sources, see page 106 for details, July 2023

Industry Links



Work Placement
You will take part in an exciting work placement during your course!

Student Spotlight

Kayleigh

Aspiring Equine Veterinary Nurse

"The course involved lots of hands-on, practical work and I had the opportunity to undertake work placements with local vets, as well as volunteering with the College's animal unit. This experience has given me the skills to progress on to university!"

University
Veterinary Nursing at Wrexham University

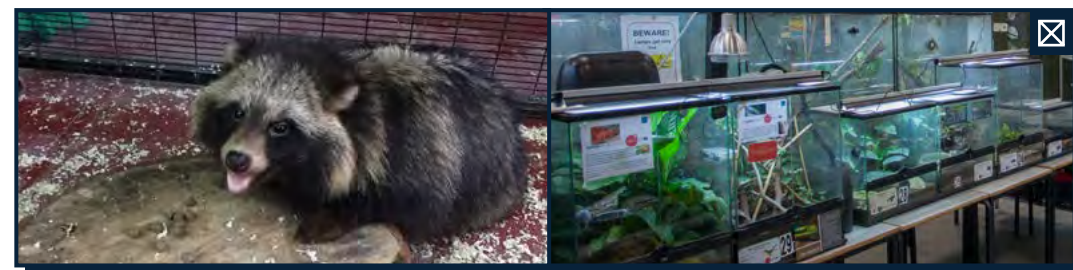
Joined us from
Middleton Technology School



Course Title	Entry Requirements	Progression
T-LEVEL Animal Care and Management	5 GCSEs at grade 4 or above (including English language, maths and science)	University or Employment
or		
Level 3 Extended Diploma	4 GCSEs at grade 4 or above (including English, maths, science and preferably a minimum of 5 days voluntary experience)	University or Employment
or		
Level 2 Technical Certificate	4 GCSEs at grade 3 or above (including English, maths, science and preferably a minimum of 3 days voluntary experience)	Level 3 or Employment
or		
Level 2 Certificate	3 GCSEs at grade 3 or above (including English, maths and preferably a minimum of 3 days voluntary experience)	Level 3 or Employment
or		
Level 1 Diploma	3 GCSEs at grade 2 or above (including English)	Level 2 or Apprenticeship

Student Experience

Merseyside Police's expert Dog Handler, brought along police dog, Paddy, to teach our students about dog handling and life as a trainer. This is one of the many opportunities our students have access to when exploring animal behaviour and training!



Are you interested in completing an apprenticeship?
See page 34 for more information.



Art and Design

Show off your individuality and creativity in our specialist studio spaces, where you will explore a wide range of art disciplines including 3D modelling, print making, illustration, fine art painting, textiles, photography and graphic design.

Alongside developing your own portfolio of work, you'll gain valuable insight from established artists and designers and showcase your work at an end-of-year exhibition.

You will also have the opportunity to work on live briefs and projects with local and regional employers!



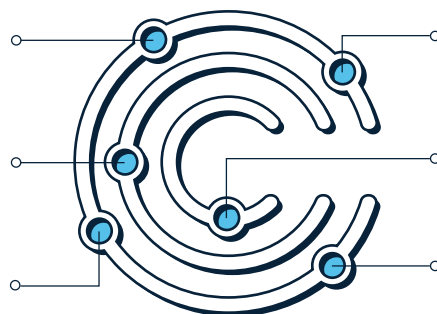
Visit www.sthelens.ac.uk/art for more information

Connecting Classroom to Career

Interior Designer
£18k - £45k

Graphic Designer
£18k - £35k

Architect
£30k - £60k+



Illustrator
£18k - £40k

Photographer
£17k - £45k

Art Therapist
£33k - £47k

*Salary data collected from various sources, see page 106 for details, July 2023

Industry Links



Education Partner

Work Placement
You will take part in an exciting work placement during your course!

Student Spotlight

Will

Aspiring Architect

"I have progressed from level 1 through to level 3, allowing me to explore multiple art disciplines and learn from tutors, who are practising artists themselves. I have achieved D*D*D and I'm heading to Liverpool John Moores University to study Architecture."

University
Architecture at Liverpool John Moores University

Joined us from
Rainhill High School

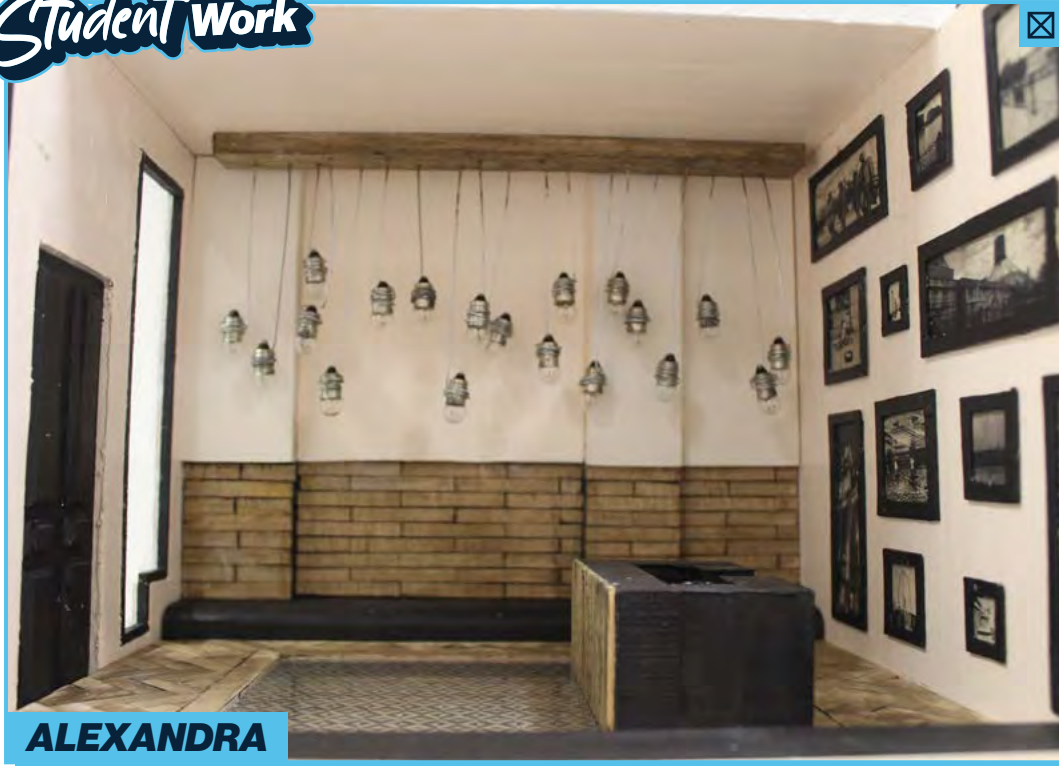


Course Title	Entry Requirements	Progression
Level 3 Extended Diploma	4 GCSEs at grade 4 or above (including English and/or maths, and an art related subject)	University or Employment
Level 2 Diploma	1 GCSE at grade 4 or above	Level 3 or Employment
Level 1 Diploma	4 GCSEs at grade 2 or above	Level 2

Student Experience

Students took part in an exclusive workshop with Stage Designers from the Royal Opera House, designing and creating props using a variety of materials. Students also gained an insight into the role of a Stage Designer, including the behind-the-scenes process of set and costume design.





ALEXANDRA



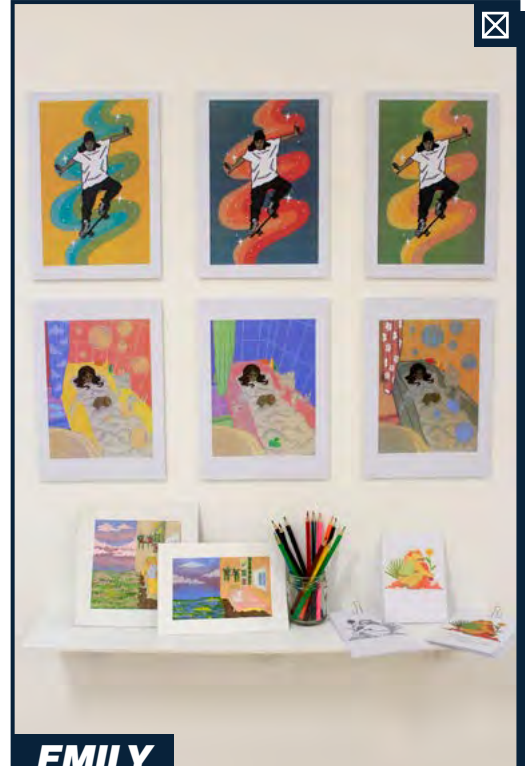
NADEDJA



MEGAN



CODIE-LEE



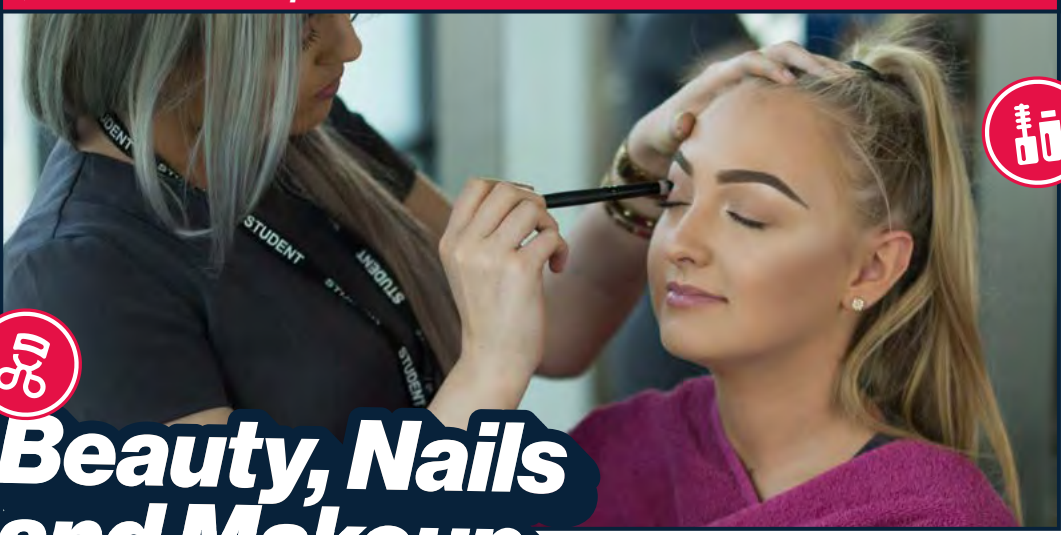
EMILY



LEAH



ART AND DESIGN

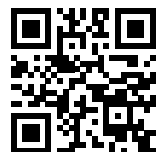


Beauty, Nails and Makeup

The beauty industry brings together creative professionals to deliver extraordinary experiences and services to clients.

From contouring and false eyelashes to spray tanning, pedicures and skincare treatments, you will practise your skills and knowledge in our very own commercial salon, The Lounge.

You will also showcase your skills in industry competitions such as WorldSkills, and use the latest brands including Dermalogica, Glitterbels by Annabel and Eve Taylor, to meet the demands of the industry.



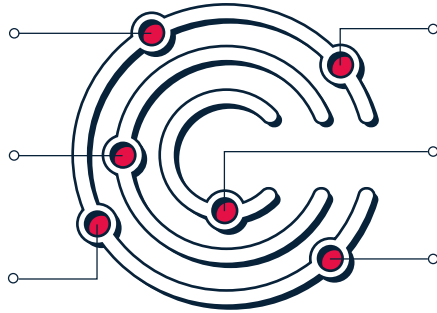
Visit www.sthelens.ac.uk/beauty for more information

Connecting Classroom to Career

Skincare Specialist
£13k - £25k+

Salon Manager
£20k - £30k+

Beauty Therapist
£16k - £25k+



Makeup Artist (TV, Film, Theatre)
£13k - £30k+

Aromatherapist
£20k - £30k

Nail Technician
£15k - £25k+

*Salary data collected from various sources, see page 106 for details, July 2023

Industry Links



Work Placement
You will take part in an exciting work placement during your course!



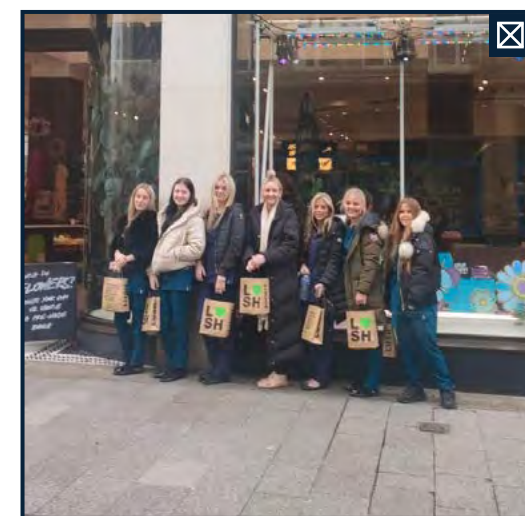
Students took a trip to the incredible Nails by Annabel salon! The flagship salon is also the headquarters for Glitterbels, the world-famous acrylic nail products that our students use throughout their studies. The students had the chance to meet Annabel Maginnis, founder of Glitterbels, and Head Trainer, Charli Jepson, to learn more about their products and how Annabel started her business.

Student Experience

We are incredibly proud of level 3 students, Sammie-Jo, Amanda and Charli, who made it through to the WorldSkills UK finals! Sammie-Jo won bronze at the event which was held at Blackpool and The Fylde College!



Hairdressing and Beauty students competed in the Association of Hairdressers and Therapists (AHT) Northwest Championships in Blackpool. Ten of our talented students made it through to the National Final, with the College scooping second place for the overall 'Best College in the Northwest'.



Students visited Lush in Liverpool for an exclusive tour of the world's largest Lush store and spa. The students learnt all about Lush ethics, how the business started, including detailed information about their products and how they are made. They even had a go at making their own Lush Bubble Bar and took home some free sample products.

Beauty Therapy

Course Title	Entry Requirements	Progression
Level 3 Diploma	Level 2 qualification	Another Beauty Course or Employment
Level 2 Diploma	4 GCSEs at grade 3 or above (including English and maths)	Level 3 or Employment
Level 1 Certificate	No formal qualifications, just passion and commitment to your studies	Level 2



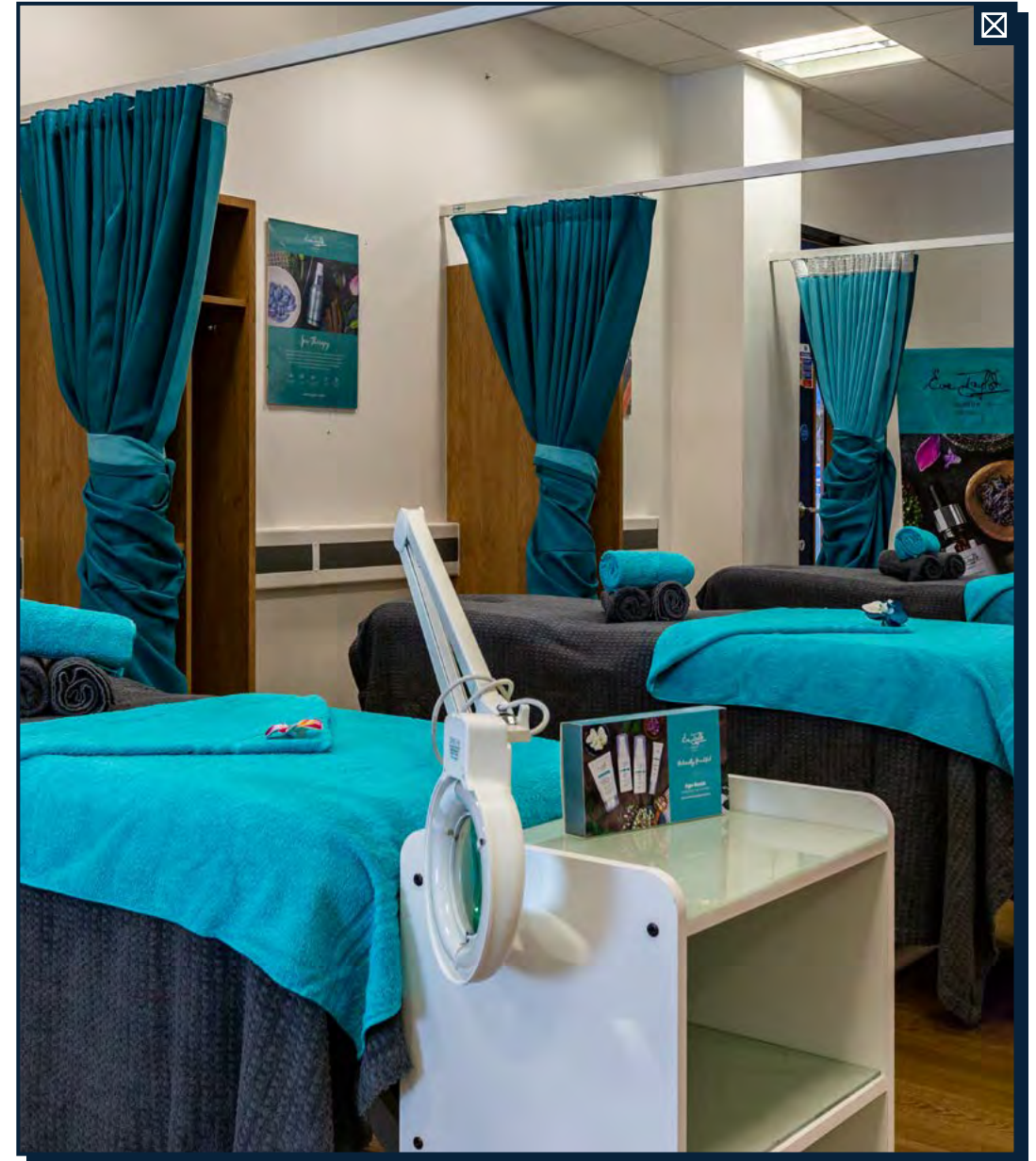
Hair and Makeup

Course Title	Entry Requirements	Progression
Level 3 Diploma	Level 2 qualification	Another Beauty Course or Employment
Level 2 Diploma	4 GCSEs at grade 3 or above (including English and maths)	Level 3 or Employment



Nail Technology

Course Title	Entry Requirements	Progression
Level 3 Diploma	Level 2 qualification and a grade 4 in English and maths	Another Beauty Course or Employment
Level 2 Diploma	4 GCSEs at grade 3 or above (including English and maths)	Level 3 or Employment





Business

Whether you have a passion for entrepreneurialism or an interest in leadership and management, studying business provides a great stepping stone to a broad range of exciting career opportunities.

You will learn the theoretical knowledge and practical understanding of the business sector, exploring a range of topics such as personal and business finance, marketing, recruitment and selection.

You will also have the opportunity to pitch a new business idea, develop and execute your own marketing campaign and plan and manage your own event.



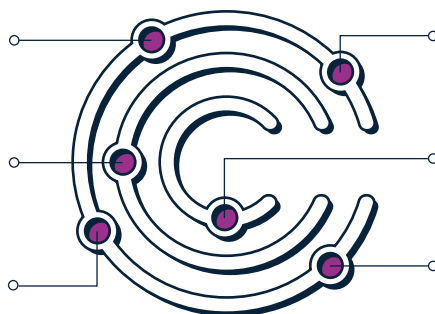
Visit www.sthelens.ac.uk/business for more information

Connecting Classroom to Career

Supply Chain Manager
£24k - £28k

Purchasing Manager
£30k - £60k

Human Resources Officer
£18k - £40k



Business Development Manager
£26k - £64k

Marketing Manager
£27k - £65k

Chartered Accountant
£40k - £85k+

*Salary data collected from various sources, see page 106 for details, July 2023

Industry Links



Work Placement
You will take part in an exciting work placement during your course!

Course Title	Entry Requirements	Progression
T-LEVEL Business Management and Administration or	5 GCSEs at grade 4 or above (including English language and maths)	University, Apprenticeship or Employment
Level 3 Extended Diploma	5 GCSEs at grade 4 or above (including English or maths)	University, Apprenticeship or Employment
Level 2 First Extended Certificate	4 or more GCSEs at grade 3 (including English or maths)	Level 3, T Level, Apprenticeship or Employment

Student Experience



Our amazing Business students raised over £300 for Cancer Support Charity, Macmillan!

The students ran a "Football Friends" tournament, where students from our Sports, Business, Performing Arts and Health and Social Care departments were put into 5-a-side teams, rotating players as the organising students acted as officials. They also hosted a Christmas bake sale and teamed up with our catering department to host a world food event in the canteen, serving up dishes traditional from different countries!

Not only did the students raise money for an excellent cause, but the fundraisers also contributed to the students' "Planning an Event" module, giving them a chance to put into practice the planning and organisation skills they'll use in their future careers.



Are you interested in completing an apprenticeship?
See page 34 for more information.



Catering and Hospitality

As visitor numbers continue to grow rapidly in the Liverpool City Region, this provides a great opportunity for you to launch your own business, or be part of a creative team, in a fast-paced and innovative industry.

You will develop your practical skills in our training kitchens, preparing, cooking and finishing complex dishes, from fish and meat to shellfish. You will also master the art of hot and cold desserts.

We are proud of our links with top chefs, with many of our students going on to work at reputable restaurants such as The Art School Liverpool and Panoramic 34.



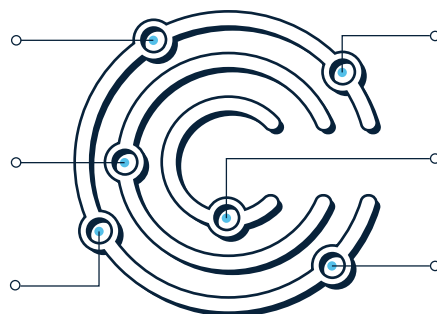
Visit www.sthelens.ac.uk/catering-hospitality for more information

Connecting Classroom to Career

Head Chef
£23k - £50k

Chef De Rang
£15k - £25k

Sous Chef
£22k - £30k



Sommelier
£24k - £32k

Catering Manager
£18k - £30k

Restaurant Manager
£18k - £28k

*Salary data collected from various sources, see page 106 for details, July 2023

Industry Links



LU BAN!
RESTAURANT

Work Placement
You will take part in an exciting work placement during your course!



Level 3 Professional Cookery students enjoyed a private dinner with Chef Patron, Paul Askew, at his Liverpool fine dining restaurant, The Art School. The students received an exclusive tour of their kitchens, wine cellar, and private dining room, where they enjoyed a delicious 5-course meal, including summer mocktails on arrival!

Student Experience

Students worked alongside chefs from the British Army to create a three-course meal using simple ingredients from army ration packs, which are used in the field to feed up to 10 people for a week!



Students accompanied top chef and local councillor, James Holden at Rainford Village Hall for a Gala Dinner in celebration of the Coronation of King Charles III. Nine students volunteered their time to work alongside James, preparing and serving a four-course dining experience.



Catering students put their skills into practice at the Marina Dalglish Ball at Knowsley Hall. They worked alongside Knowsley Hall's Head Chef, Gareth Boulton, and his team to create a selection of delicious canapés and courses for guests at the renowned event.

Professional Cookery

Course Title	Entry Requirements	Progression
Level 3 Diploma Professional Cookery	4 GCSEs at grade 4 or above (including English or maths, or a level 2 qualification)	Employment or Culinary School
or		
Level 3 NVQ Diploma Food Production and Cooking	Level 2 Food Production and Cooking qualification	Employment or Culinary School
⬆		
Level 2 Diploma Professional Cookery	4 GCSEs at grade 4 or above (including English or maths, or a level 1 qualification)	Level 3 or Employment
or		
Level 2 NVQ Diploma Food Production and Cooking	4 GCSEs at grade 3 or above (including English or maths)	Level 3 or Employment
⬆		
Level 1 NVQ Certificate	No formal qualifications, just passion and commitment to your studies	Level 2

Student Spotlight

ALEX

Inspiring Deputy Restaurant Manager
at The Art School

"I had amazing opportunities during my course, from working in the College's award-winning restaurant to experiencing the energetic atmosphere at high-profile events. This is how I secured employment at Paul Askew's, exclusive fine dining restaurant, The Art School."



Course
Level 2 Diploma in Food and Beverage Service

Joined us from
Geniko Lykio Soronis (Rhodes)

Hospitality

Course Title	Entry Requirements	Progression
Level 3 NVQ Diploma	4 GCSEs at grade 3 or above	Employment or Further Training



★ Filips

Filips

"My most memorable moment at College was coming second place at the Inter Colleges Culinary Skills competition."

Classroom: Level 3 Advanced Diploma in Professional Cookery

Career: Aspiring Head Chef

Joined us from: St Augustine of Canterbury Catholic High School

Molly

Aspiring Patisserie Chef

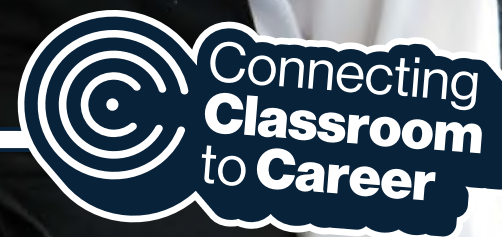
“ Learning and working alongside experienced Chefs, who are professionals within the industry, give me the confidence to handle the pressures of working within the kitchen! I developed a love for artisan baking and I'm now heading to London to study patisserie technology at the National Bakery School.”

Course: Level 3 Advanced Diploma in Professional Cookery

Career: Aspiring Patisserie Chef

Joined us from: Birchwood Community High School

★ Molly





Computing and IT

With extensive advancements in technology, and with data breaches becoming increasingly more common and sophisticated, professionals working in this industry have never been in higher demand.

Computing is a very creative field that combines invention with methodical thinking, and the skills that you'll develop in our computer suites, can be transferred to a wide variety of business, scientific and social contexts.

You will explore the practice of IT project management, social media in business and gain advance knowledge of cyber security, data modelling and programming.



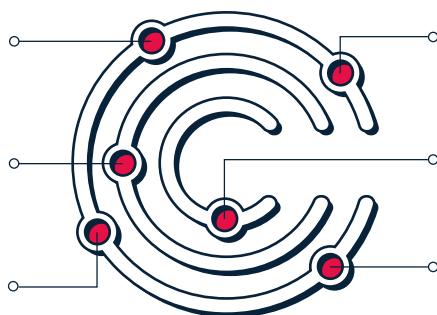
Visit www.sthelens.ac.uk/IT for more information

Connecting Classroom to Career

Web Developer
£20k - £60k

IT Support Technician
£18k - £35k

Network Engineer
£25k - £52k



Cyber Intelligence Officer
£25k - £50k

Software Developer
£24k - £70k

Forensic Computer Analyst
£25k - £60k

*Salary data collected from various sources, see page 106 for details, July 2023

Industry Links



COLLABCO

Work Placement
You will take part in an exciting work placement during your course!

Student Spotlight Ben

Aspiring
Computer Forensic Analyst

"Attending St Helens College gave me the confidence to believe I could go on to university. I achieved D*D*D* in addition to achieving Microsoft Office Specialist awards and Cisco. I was awarded a Scholarship at Liverpool John Moores University for Academic Excellence."

Classroom
Level 3 Extended Diploma

Joined us from
Launchpad Centre



Course Title	Entry Requirements	Progression
T-LEVEL Digital Support Services	5 GCSEs at grade 4 or above (including English language and maths)	University, Apprenticeship or Employment
or		
Level 3 Extended Diploma	5 GCSEs at grade 4 or above (including English or maths)	University or Employment
or		
Level 2 Technical Diploma	4 GCSEs at grade 3 or above (including English or maths)	Level 3, T Level, Apprenticeship or Employment
or		
Level 1 Diploma	No formal qualifications, just passion and commitment to your studies	Level 2



Student Experience

Students attended the Merseyside Police Cyber Crime Challenge, going head-to-head with colleges from across the Liverpool City Region, competing in a series of cyber security challenges, including coding, building PCs, drone capture, AI and decryption.



Are you interested in completing an apprenticeship?
See page 34 for more information.



Construction

The construction industry is constantly growing and evolving, which is what makes working in this industry so varied and exciting.

Whether it is working on commercial developments, innovative housing or on people's homes, you will feel like you have one of the best careers in the world. You will learn your trade in a purpose built environment with real, made-to-scale structures, for you to decorate, plaster, renovate and build in.

You will also have the chance to gain valuable work experience and showcase your skills in industry competitions.



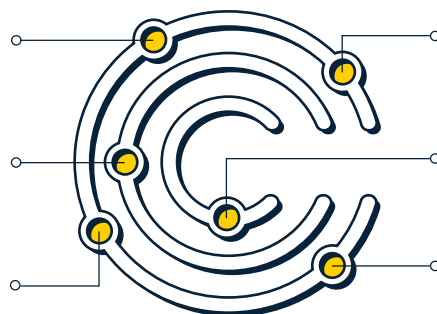
🔍 Visit www.sthelens.ac.uk/construction for more information

Connecting Classroom to Career

Electrician
£18k - £42k

Construction Manager
£27k - £65k

Building Site Inspector
£21k - £50k



Building Surveyor
£26k - £77k

Plumber
£15k - £40k

Bricklayer
£17k - £40k

*Salary data collected from various sources, see page 106 for details, July 2023

Industry Links



Work Placement
You will take part in an exciting work placement during your course!

CONSTRUCTION

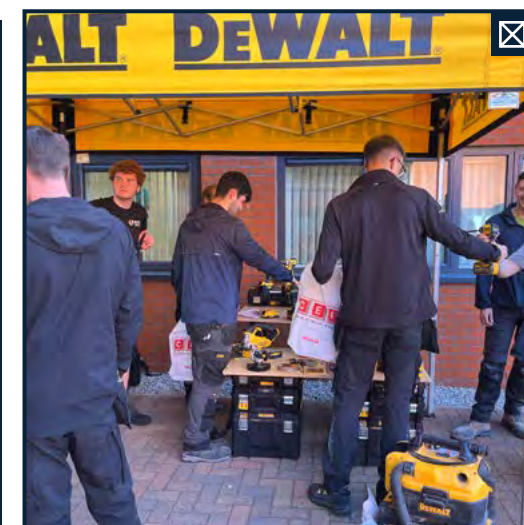


Carpentry and Joinery and Painting and Decorating students designed and constructed this spectacular plinth for St Helens RLFC, displaying the amazing #FOURmidable Saints trophies!

In 2022-2023, our construction department received generous donations from employers such as:



Plumbing and Domestic Heating Apprentice, Maizie, is leading the way for women in construction, after competing in the first ever HIP Female Skills competition.



Construction students and apprentices felt inspired following a unique opportunity to network with industry professionals and receive an equipment and tools demonstration during our College Trade Day.

Bricklaying

Apprenticeship route available

You will learn everything there is to know about becoming a skilled Bricklayer, covering modules such as masonry cladding, constructing cavity walling and setting out masonry structures.

Course Title	Entry Requirements	Progression
Level 2 Technical Certificate	Level 1 qualification	Apprenticeship or Employment
Level 1 Diploma	GCSEs at grade 3 or above (including English and maths)	Level 2 or Apprenticeship



Carpentry and Joinery

Apprenticeship route available

To prepare you for a career in the industry, you will carry out structural and fixing operations, including exploring flooring and roofing, partitions and carpentry maintenance.

Course Title	Entry Requirements	Progression
Level 2 Technical Certificate	Level 1 qualification	Apprenticeship or Employment
Level 1 Diploma	GCSEs at grade 3 or above (including English and maths)	Level 2 or Apprenticeship

Student Spotlight Josh Aspiring Electrician

"The course is practical and hands-on. I learn so much better this way and it keeps it fun and interesting. I've even had the opportunity to gain work experience alongside the course. I'm hoping to become a qualified Electrician, working for a contractor or running my own business."

Course
Level 2 Electrical Installation

Joined us from
St Edwards College



Students had exclusive behind-the-scenes access to the new Lea Green Train Station development in St Helens with architect, Vextrix and Northern Railway! The Director of Vextrix also gave students a tour of the construction site and provided insight into what it takes to complete the large scale project.



Electrical Installation

Apprenticeship route available

Whilst learning all about electrical installation technology, you will explore electrical science, gaining knowledge in specialist areas such as installing wiring systems and enclosures.

Course Title	Entry Requirements	Progression
T-LEVEL Building Services Engineering for Construction (Electrotechnical Engineering)	5 GCSEs at grade 4 or above (including English language, maths and science)	University, Apprenticeship or Employment
Level 2 Technical Certificate	Level 1 qualification	T Level, Apprenticeship or Employment
Level 1 Diploma	GCSEs at grade 3 or above (including English and maths)	Level 2

Painting and Decorating

Apprenticeship route available

Based in our bespoke workshops, you will learn how to apply paint and paper to walls and ceilings, prepare surfaces and produce specialist decorative finishes.

Course Title	Entry Requirements	Progression
Level 2 Technical Certificate	Level 1 qualification	Apprenticeship or Employment
Level 1 Diploma	GCSEs at grade 3 or above (including English and maths)	Level 2 or Apprenticeship

Student Spotlight

Andrew

Inspiring
Gas Engineer

"My apprenticeship has massively boosted my confidence and created lots of opportunities for me, including competing in the HIP Learner of the Year 2022 competition and making it through to the WorldSkills UK 2023 finals."

Career
Gas Engineering Apprentice at Glennon Plumbing Services Ltd

Joined us from
Gateacre School



Plastering

Apprenticeship route available

You will learn how to complete a variety of detailed plastering tasks such as plastering internal surfaces, applying render to external surfaces, dry lining and working out materials and costings for a variety of projects.

Course Title	Entry Requirements	Progression
Level 2 Technical Certificate	Level 1 qualification	Apprenticeship or Employment
Level 1 Diploma	GCSEs at grade 3 or above (including English and maths)	Level 2 or Apprenticeship



Plumbing

Apprenticeship route available

To become a successful Plumber, you will explore everything from hot and cold water systems, central heating and gas installations to low-carbon technology and renewable energy.

Course Title	Entry Requirements	Progression
T-LEVEL Building Services Engineering for Construction (Plumbing and Heating Engineering)	5 GCSEs at grade 4 or above (including English language, maths and science)	University, Apprenticeship or Employment
Level 2 Technical Certificate	Level 1 qualification	T Level, Apprenticeship or Employment
Level 1 Diploma	GCSEs at grade 3 or above (including English and maths)	Level 2

You will be based at our brand new Green Energy Skills Centre



We have recently invested over £500k, partially funded by the Strategic Development Fund (SDF), to transform the Green Energy Skills Centre into a specialist training centre, which focuses on developing students' skills and knowledge of green home energy technology including solar energy and air and ground source heat pumps.

Maizie

Inspiring Gas Engineer

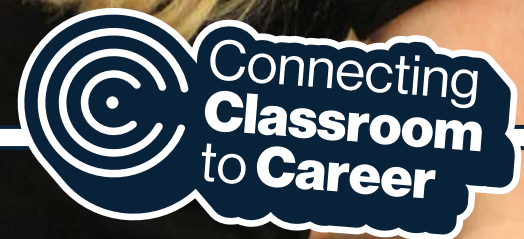
“I am a very active person; I work better when I am on the go and love being in different environments. I wanted to do something where each day holds a new challenge, and a plumbing apprenticeship offered me varied practical learning on-the-job with developing my knowledge at College. I look forward to creating a career in this industry.”

Classroom: Level 3 Gas Engineering Apprenticeship

Career: Gas Engineering Apprentice at PH Jones

Joined us from: St Edwards College

★ Maizie





Creative Media

Get to grips with producing, directing, filming and editing as you explore the creative world of filmmaking, photography, digital graphics, animation and sound.

You will have the opportunity to develop your own creative project, from an initial concept through to completion, whilst utilising our incredible facilities!

Our industry-experienced tutors have fantastic employer links, enabling you to work on live projects and briefs with professional clients.



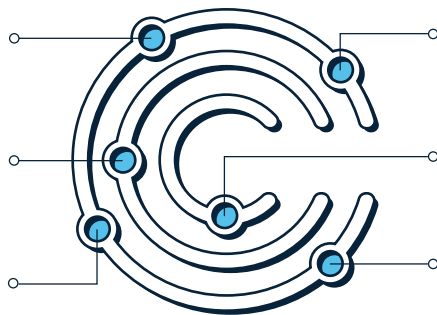
Visit www.sthelens.ac.uk/creativemedia for more information

Connecting Classroom to Career

Camera Operator
£18k - £42k+

TV/Film Producer
£30k - £100k+

Broadcast Journalist
£23k - £42k+



Video Editor
£18k - £45k+

Radio Broadcast Assistant
£16k - £29k

Live Sound Engineer
£25k - £40k+

*Salary data collected from various sources, see page 106 for details, July 2023

Industry Links



Education Partner



Work Placement
You will take part in an exciting work placement during your course!

Student Spotlight Flávio

Inspiring Graphic Designer

"Whilst doing my work experience at College, I always dreamt of working in the place that made me a professional. I have now returned to the College as a full-time Graphic Designer, working on projects such as designing this prospectus!"

Classroom
Level 3 Extended Diploma

Joined us from
Castêlo da Maia HS (Portugal)



Course Title	Entry Requirements	Progression
Level 3 Extended Diploma	4 GCSEs at grade 4 or above (including English and maths)	University or Employment

Student Experience

Working in our TV studio, green screen infinity cove and editing suites, you will use industry-standard Adobe Creative Cloud software including Photoshop, Illustrator, InDesign, After Effects, Audition, and Premiere Pro.



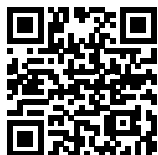


Early Years

Working with children and young people is a hugely rewarding career, whether it is supporting them in an education setting or in a clinical environment.

An essential part of any successful career is experience – which you will gain lots of alongside your course. Working in an early years setting, you will learn how to promote positive behaviour, safeguarding and protection and welfare.

When you are not on placement, you will be gaining knowledge in the classroom, exploring child development, psychology and socialisation.



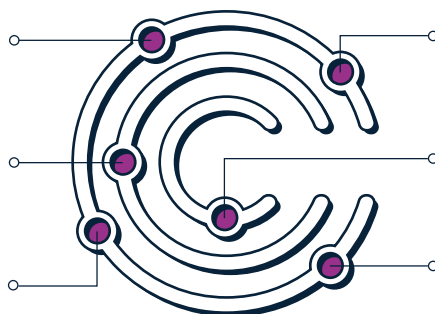
Visit www.sthelens.ac.uk/earlyyears for more information

Connecting Classroom to Career

Primary School Teacher
£28k - £43k

Child Psychologist
£30k - £60k

Social Worker
£27k - £42k



Early Years Educator
£20k - £30k

Nursery Manager
£23k - £35k

Health Play Specialist
£22k - £31k

*Salary data collected from various sources, see page 106 for details, July 2023

Industry Links



Work Placement
You will take part in an exciting work placement during your course!

Student Spotlight Antony

Aspiring Primary School Teacher

"We have completed so many projects and have had amazing guest speakers providing information on different career pathways. I've loved my time on the course, and it has prepared me to work towards my dream of becoming a Primary School Teacher."

Classroom
Level 3 Technical Diploma

Joined us from
St Augustine of Canterbury Catholic High School



Course Title	Entry Requirements	Progression
T-LEVEL Education and Childcare (Early Years Educator)	5 GCSEs at grade 4 or above (including English language and maths, and a clear DBS)	University, Apprenticeship or Employment
Level 2 Diploma	3 GCSEs at grade 3 or above (including English or maths, plus 1 GCSE at grade 4 in English language or maths)	T Level, Apprenticeship or Employment
Level 1 Diploma	No formal qualifications, just passion and commitment to your studies	Level 2 or Apprenticeship

Student Experience

Students provided an interactive storytelling session for the College's nursery children, bringing the book 'Dear Zoo' to life. They even created props such as crochet animals for the children to keep!



Are you interested in completing an apprenticeship?
See page 34 for more information.



Engineering

Rapid advancements in the engineering industry, specifically within the fields of electrical, marine, aeronautical, advanced manufacturing and wind turbine, makes working in this industry so exciting and varied.

From working in our engineering workshops, using industry standard machinery and equipment to building your knowledge in the classroom, you will carry out a range of engineering projects to enhance your practical skills and technical ability.

Alongside developing crucial employability skills, you will complete work experience with employers.



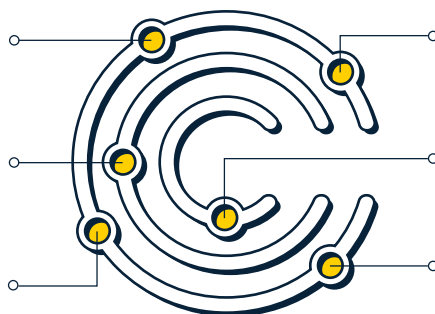
Visit www.sthelens.ac.uk/engineering for more information

Connecting Classroom to Career

Aerospace Engineer
£25k - £52k

Manufacturing Systems Engineer
£20k - £48k

CAD Technician
£17k - £35k+



Product Designer
£22k - £45k

Electrical Engineer
£20k - £60k

Mechanical Engineer
£20k - £52k

*Salary data collected from various sources, see page 106 for details, July 2023

Industry Links



Work Placement
You will take part in an exciting work placement during your course!

Student Spotlight Sophie

Aspiring Multi-Skilled Engineer

"Joining the course straight from School, I found the transition hard at first, but it has been so rewarding. I have now completed my level 3 qualification and have secured a Multi-Skilled Engineering Apprenticeship with AB World Foods."

Career
Level 3 Mechanical Engineering

Joined us from
Outwood Academy Haydock

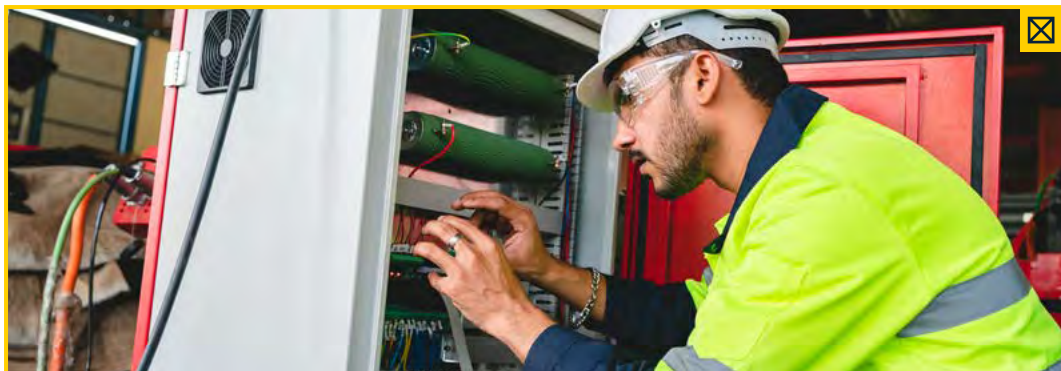


Student Experience

Students and apprentices had the opportunity to see the UK's first hydrogen-powered refuse collection vehicle, which gave them an insight into the cutting edge technology they will be working with in their future careers.



Are you interested in completing an apprenticeship?
See page 34 for more information.



Introduction to Engineering

Course Title	Entry Requirements	Progression
Level 1 Certificate	GCSEs at grade 2 or above (including English, maths and science)	Level 2 (Electrical Engineering or Mechanical Engineering)

Electrical Engineering

Apprenticeship route available

Course Title	Entry Requirements	Progression
T-LEVEL Design and Development for Engineering and Manufacturing (Electrical and Electronic)	5 GCSEs at grade 4 or above (including English language and science and a grade 5 in maths)	University, Apprenticeship or Employment
Level 3 Diploma	4 GCSEs at grade 4 or above (including English, science and a grade 5 in maths)	University, Apprenticeship or Employment
Level 2 Certificate	4 GCSEs at grade 4 or above (including English, maths and science)	Level 3, T Level or Apprenticeship

Mechanical Engineering

Apprenticeship route available

Course Title	Entry Requirements	Progression
T-LEVEL Design and Development for Engineering and Manufacturing (Mechanical)	5 GCSEs at grade 4 or above (including English language and science and a grade 5 in maths)	University, Apprenticeship or Employment
Level 3 Diploma	4 GCSEs at grade 4 or above (including English, science and a grade 5 in maths)	University, Apprenticeship or Employment
Level 2 Certificate	4 GCSEs at grade 3 or above (including English, maths and science)	Level 3, T Level or Apprenticeship

★ **Rebecca**



Rebecca

“I have always loved discovering how things work and prefer to learn in a practical way, so when I had the opportunity to complete an engineering apprenticeship, I jumped at the chance. After completing my apprenticeship, I hope to progress on to a Higher National Certificate (HNC) to continue developing my skills.”

Classroom: Level 3 Extended Diploma in Mechanical Engineering

Career: Mechanical Engineering Apprentice at Cheshire Seals and Components

Joined us from: Cowley International College



Games, Animation and VFX

The Northwest is home to a growing digital arts industry and key production studios for animation, games production and visual effects for TV and film, which means big employers are always looking for fresh talent!

Designed by leading industry partners such as Ubisoft, Sony, Framestore, Blue Zoo and Double Negative, you will develop technical, artistic and programming skills that are crucial to you launching your career. You will also have the opportunity to work on a range of live briefs with local and regional employers.



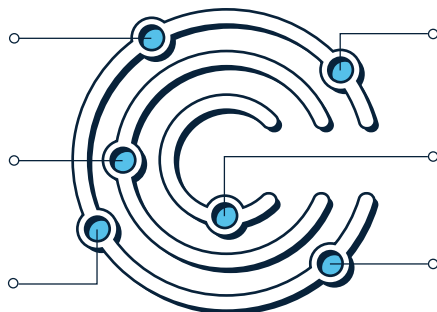
Visit www.sthelens.ac.uk/games for more information

Connecting Classroom to Career

Animator
£18k - £36k+

VFX Junior Artist
£30k - £38k

Games Developer
£25k - £70k



3D Artist
£20k - £46k

Concept Artist
£17k - £40k

Level Editor
£21k - £35k+

*Salary data collected from various sources, see page 106 for details, July 2023

Industry Links



Work Placement
You will take part in an exciting work placement during your course!

Student Spotlight Thomas

Inspiring
Junior 3D Artist at Wushu Studios

"I was able to explore many facets of game development allowing me to discover what I loved most, 3D art! I now work at Wushu Studios Ltd as a 3D Junior Artist, creating content for both new and existing games, such as the recently released Fall Guys Creative Mode and Baldur's Gate 3."

Classroom
Level 3 Extended Diploma

Joined us from
De La Salle High School



Course Title	Entry Requirements	Progression
Level 3 Extended Diploma	4 GCSEs at grade 4 or above (including English and/or maths, and an art related subject)	University or Employment

Student Experience

Industry Challenge

Students took part in NextGen Skills Academy's Industry Challenge, which involved responding to a brief based on climate change. Working alongside industry professionals from game studios, Ripstone and Radical Forge, the students designed an impressive digital fleet of spaceships, before presenting their work to a panel of experts from Creative Assembly and Framestore!



Graduate Showcase

Students attended NextGen's Graduate Showcase 2023, held at the iconic BAFTA Headquarters at 195 Piccadilly, London!

The event saw over 80 exceptional students from across the NextGen network of colleges showcasing their work to industry professionals. The College won best of show again! With team 'Sent Down' winning the student choice award for best game overall.

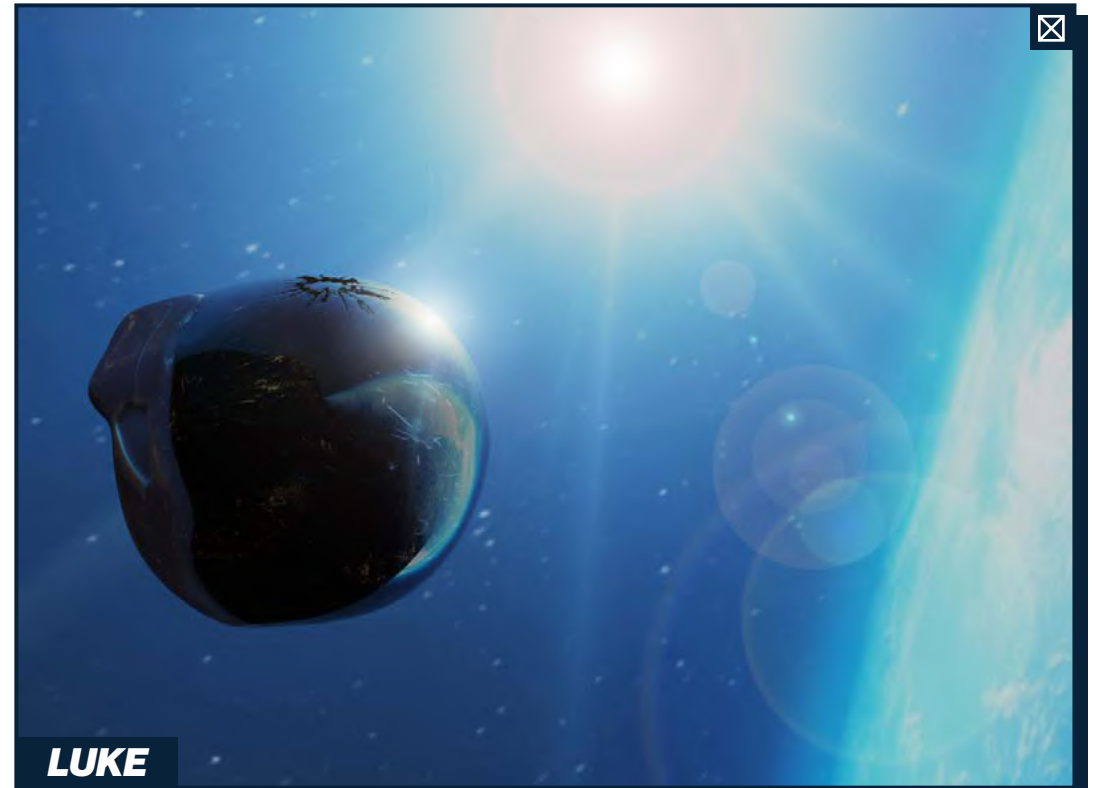
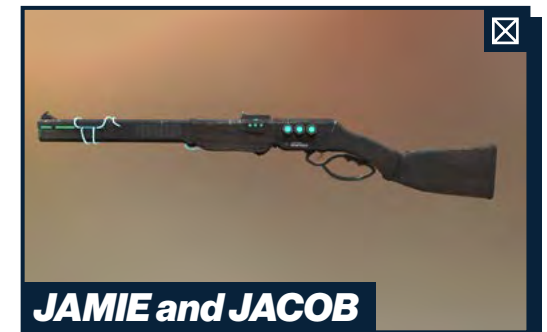
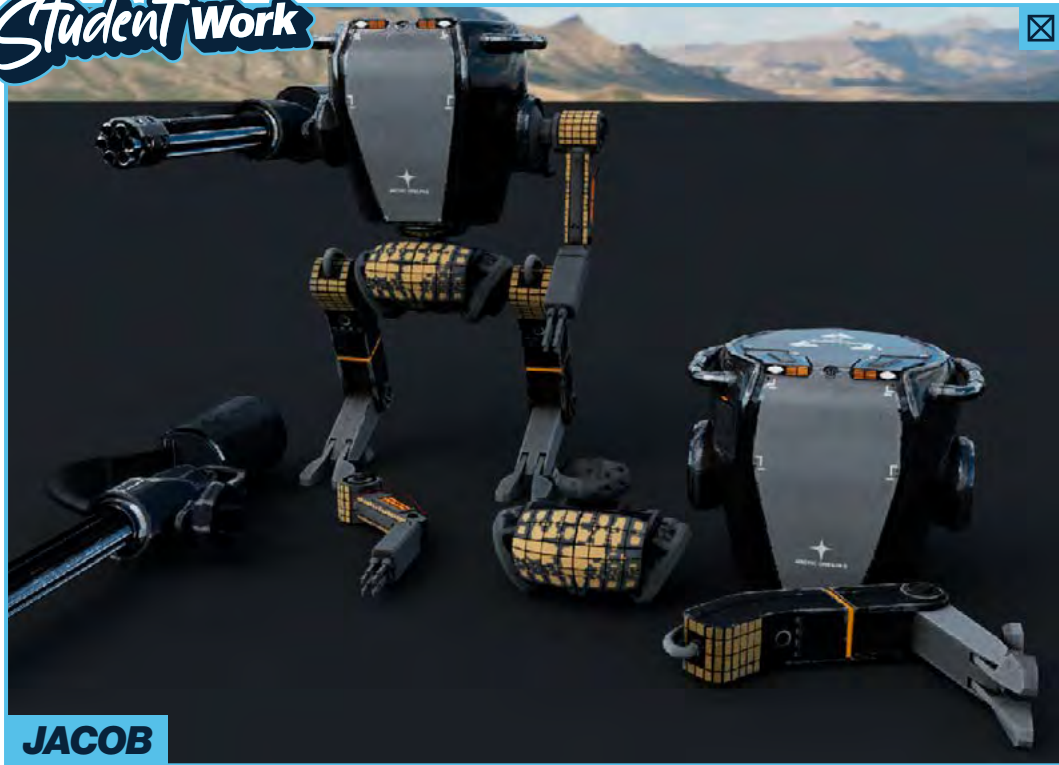


Into the Void

A group of students created a short VFX trailer, 'Into the Void', as part of their final year project work.

Using a combination of motion capture techniques the team perfected their idea and had the chance to pitch the concept at the NextGen Skills Academy Graduate Showcase.





GAMES, ANIMATION AND VFX



A

Graphic Design

The UK has the second largest design industry in the world, and is recognised as an innovative leader with high quality designers. Now more than ever, employers are looking for talented individuals with the right mix of skills, creativity and imagination.

You will unleash your creativity across a range of disciplines from designing fonts, typefaces and magazine layouts to exploring digital and traditional illustration and studying 2D animation.

Working on live briefs with local employers is a crucial part of your course, alongside showcasing your work at our end-of-year show.



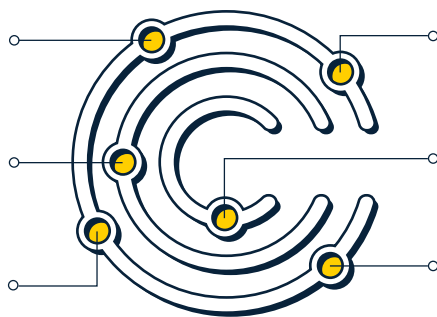
Visit www.sthelens.ac.uk/graphicdesign for more information

Connecting Classroom to Career

Graphic Designer
£18k - £35k

Product Designer
£23k - £45k

Animator
£18k - £36k



Advertising Art Director
£18k - £45k+

Art Editor
£20k - £40k

Illustrator
£18k - £40k

*Salary data collected from various sources, see page 106 for details, July 2023

Industry Links



Work Placement
You will take part in an exciting work placement during your course!

Student Spotlight

Nicole

Aspiring Graphic Designer



"I really enjoyed the variety of projects we undertook, from screen printing to creating our own branding. I also created my own website which I have continued to update with designs and illustrations."

University
Graphic Design at Liverpool John Moores University

Joined us from
Rainhill High School

Course Title	Entry Requirements	Progression
Level 3 Extended Diploma	4 GCSEs at grade 4 or above (including English and/or maths, and preferably an art related subject)	University or Employment

Student Experience

Students created a series of impressive animations based on books that have been adapted into films, such as The Maze Runner, Jaws and Charlie and the Chocolate Factory. The work ranged from digital 3D animation to mixed media elements such as collage, painting and drawings, all combined with digital editing and animation techniques.



Former Graphic Design student Emily, completed an impressive project in collaboration with Liverpool School Sports Partnership. She created a range of characters that will be used in activity workbooks as part of a mental health and wellbeing project.

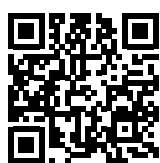


Hairdressing

A career in hairdressing can take you anywhere in the world, from working in a spa, at a holiday resort or on film and TV, to cruise liners and even the theatre. It's hard work but it's exciting!

Based in our commercial hairdressing salon, you will practice your cutting, colouring and styling skills on clients.

You will also have the opportunity to become a State Registered Hairdresser (SRH) with the Hair Council at the end of your course, an official recognition that is valued by employers.



Visit www.sthelens.ac.uk/hairdressing for more information

Connecting Classroom to Career

Hairdresser
£14k - £30k

Barber
£15k - £25k

Colour Specialist
£19k - £28k

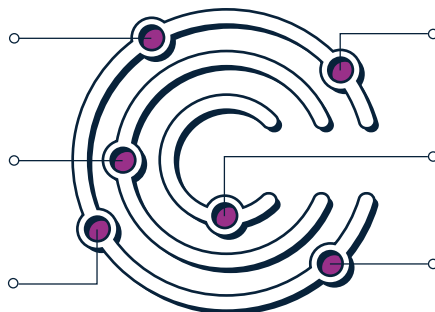


Image Consultant
£18k - £30k

Senior Stylist
£20k - £30k

Salon Manager
£17k - £29k

*Salary data collected from various sources, see page 106 for details, July 2023

Industry Links



Work Placement
You will take part in an exciting work placement during your course!

Student Spotlight

Nicole

Aspiring Hair Stylist

"I really enjoy working in the College's salon. Practising my skills on paying clients has given me the confidence to secure an apprenticeship in a local salon."

Classroom
Level 2 Diploma

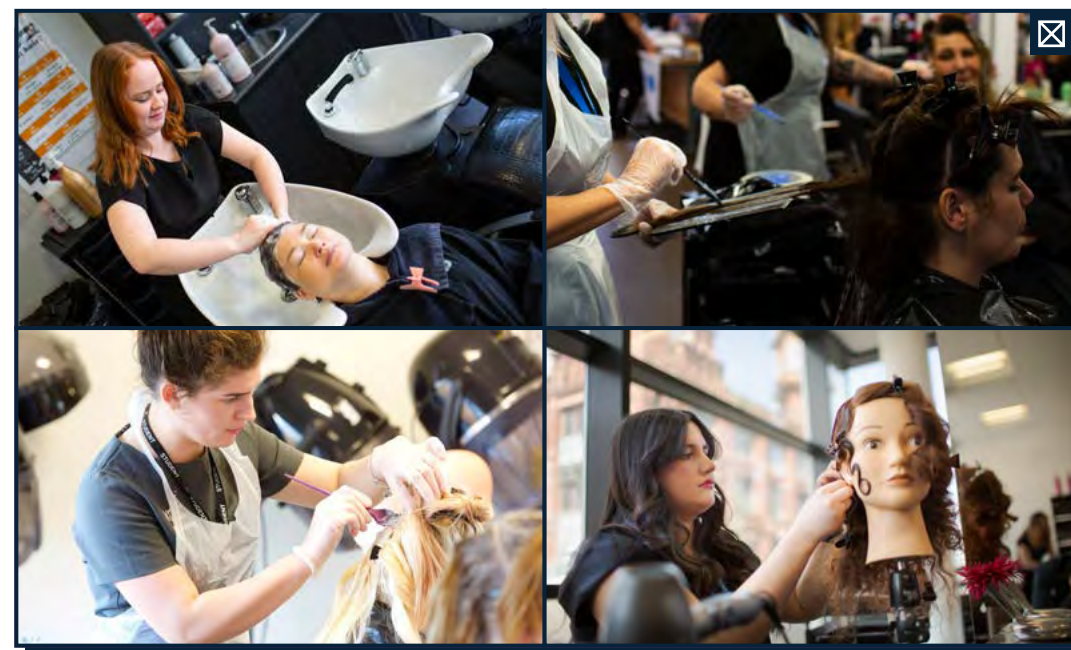
Joined us from
De La Salle High School



Course Title	Entry Requirements	Progression
Level 3 Diploma	Level 2 Hairdressing qualification	Employment
Level 2 Diploma	4 GCSEs at grade 3 or above (including English and maths)	Level 3 or Employment
Level 1 Certificate	No formal qualifications, just passion and commitment to your studies	Level 2

Student Experience

Students competed in the Association of Hairdressers and Therapists (AHT) Northwest Championships in Blackpool. Ten of our talented students made it through to the National Final, with the College scooping second place for the overall 'Best College in the Northwest'.





Health and Social Care

Working in health, social care and nursing is so varied and rewarding. Whether it is working in a clinical setting or in the community, you will feel like you have one of the best careers in the world.

You will gain hands-on experience in real, healthcare environments alongside your course, taking advantage of our strong links with employers such as the NHS and North West Ambulance Service.

Alongside this, you will explore everything from anatomy, physiology, dementia, nutrition and healthcare practice to social psychology and medication in health and social care.



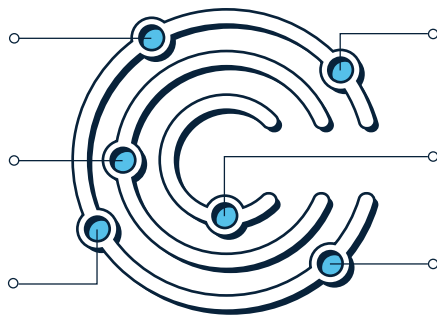
Visit www.sthelens.ac.uk/health for more information

Connecting Classroom to Career

Paramedic
£25k - £39

Healthcare Assistant
£20k - £26k

Residential Care Manager
£25k - £55k



Operating Department Practitioner
£28k - £40k

Midwife
£27k - £47k

Occupational Therapist
£27k - £47k

*Salary data collected from various sources, see page 106 for details, July 2023

Industry Links

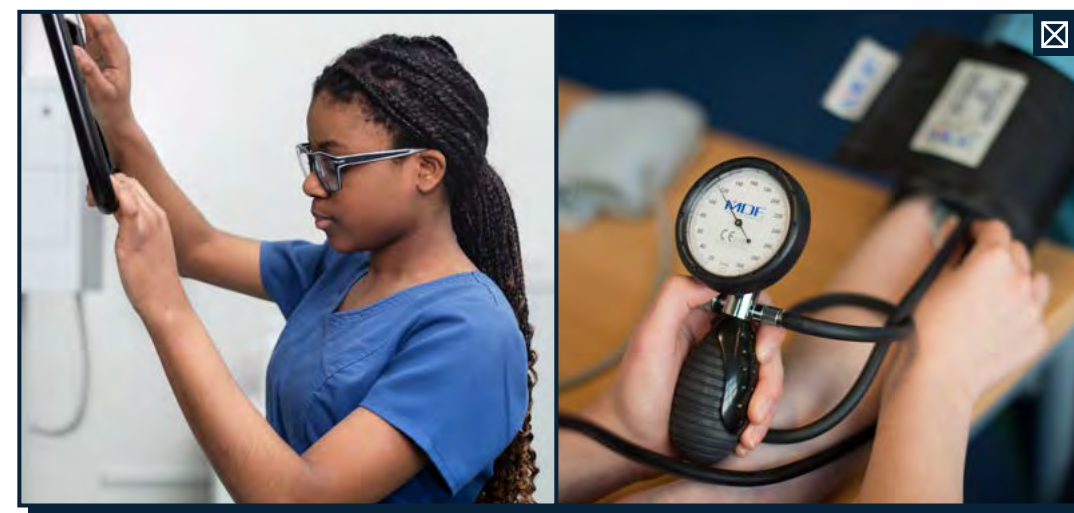


NHS
North West Ambulance Service
NHS Trust



Work Placement
You will take part in an exciting work placement during your course!

Course Title	Entry Requirements	Progression
T-LEVEL Health (Supporting the Adult Nursing Team)	5 GCSEs at grade 4 or above (including English language, maths and science)	University, Apprenticeship or Employment
or		
Level 3 Extended Diploma (Social Care)	5 GCSEs at grade 4 or above (including English and maths)	University or Employment
or		
Level 3 Certificate (Adult Social Care)	3 GCSEs at grade 4 or above (including English and/or maths)	Level 3 Extended Diploma, T Level or Employment
or		
Level 2 Extended Diploma	4 GCSEs at grade 3 or above (including English and maths)	Level 3, T Level, Apprenticeship or Employment
or		
Level 1 Diploma	2 GCSEs at grade 2 or above (including English and/or maths)	Level 2



Student Experience

Students took part in interactive workshops at our annual Healthcare Science Skills Show with a number of organisations, including St Helens and Whiston Hospitals, Alder Hey, Liverpool Heart and Chest Hospital and Medical Mavericks. The event gave them a first-hand insight into the healthcare and science sector and the many career opportunities available in the industry.



Are you interested in completing an apprenticeship?
See page 34 for more information.

Madeline

Aspiring Paramedic

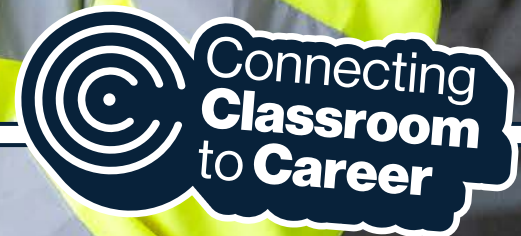
“ My course helped me to gain first-hand experience, working in emergency services with the North West Ambulance Service. I have since passed my ambulance driving test, and have been offered a position as an Ambulance Care Assistant. This role will help me work towards becoming a qualified Paramedic. ”

Course: Level 3 Extended Diploma in Health and Social Care

Career: Aspiring Paramedic

Joined us from: Rainford High School

★ Madeline





Motor Vehicle

Based in our Automotive Hub, you will develop your skills and knowledge working on real cars in our MOT bay. You will learn everything you need to know about light vehicles including chassis, transmission, engines and related systems.

Our tutors are Institute of the Motor Industry (IMI) registered, ensuring that you are being taught by the very best in the industry.

Many of our students have secured employment with their work placement employers such as Jaguar Land Rover and Howard Basfords.



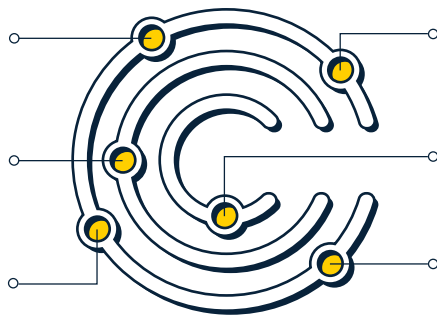
Visit www.sthelens.ac.uk/motorvehicle for more information

Connecting Classroom to Career

Motor Vehicle Fitter
£17k - £29k

Paint Sprayer
£19k - £30k

Garage Manager
£24k - £36k



Breakdown Engineer
£25k - £40k

Motorsport Engineer
£22k - £60k

Auto Electrician
£17k - £37k

*Salary data collected from various sources, see page 106 for details, July 2023

Industry Links



halfords

Work Placement
You will take part in an exciting work placement during your course!

Student Spotlight

RYAN

Inspiring
HGV Technician Apprentice

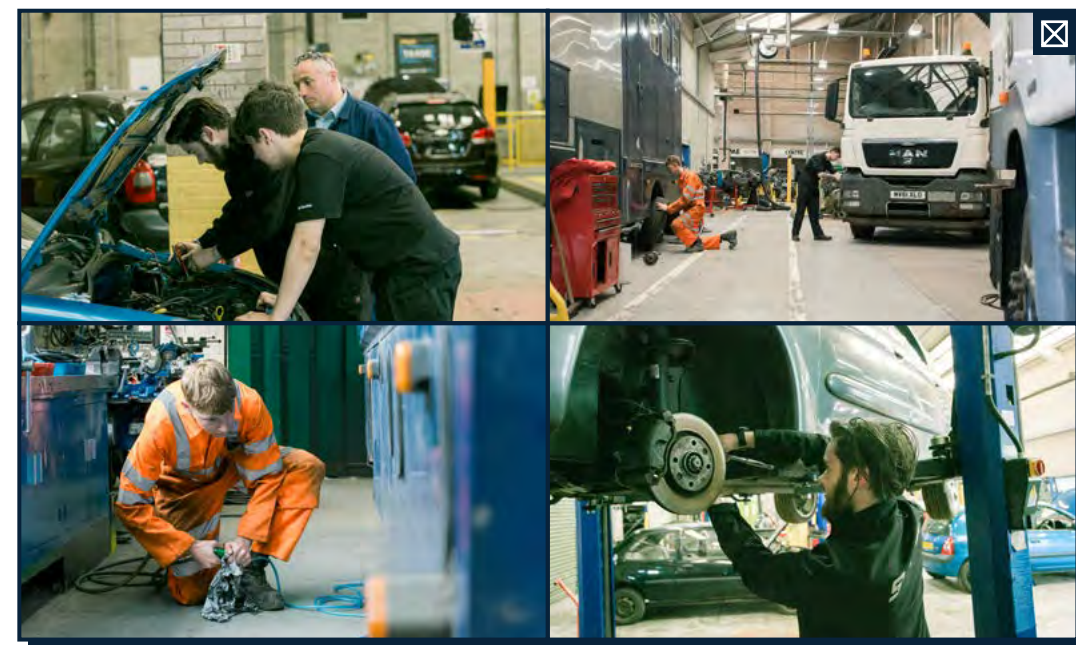
"Through my employer, J. Murphy & Sons Limited, I've had lots of opportunities to expand my skills, from working on HGV's and attending breakdowns to even working on rail machinery. My tutors are always available to offer advice and guidance too. I cannot wait to have my own garage and pit one day."

Classroom
Level 3 Heavy Vehicle Technician Apprenticeship

Joined us from
Westhoughton High School



Course Title	Entry Requirements	Progression
Level 2 Certificate	Level 1 qualification	Apprenticeship or Employment
Level 1 Diploma	GCSEs at grade 3 or above (including English or maths)	Level 2 or Apprenticeship



Student Experience

Students and apprentices had a visit from ULEMCo Ltd, global pioneers of revolutionary technology that enables commercial vehicles to run on dual fuel including hydrogen. The company brought with them their upcycled hydrogen van for students to explore!



Are you interested in completing an apprenticeship?
See page 34 for more information.



Music Production

Explore the world of sound in a creative and innovative environment, working alongside tutors who are active professionals in the music industry (and have even had their own record label!).

Designed to meet the competitive demands of the industry, our courses transform your passion for music into your dream career.

Our courses help you to gain technical knowledge and skills, using the latest software such as Cubase, Reason and Ableton Live and provide you with incredible opportunities to gain live experience.



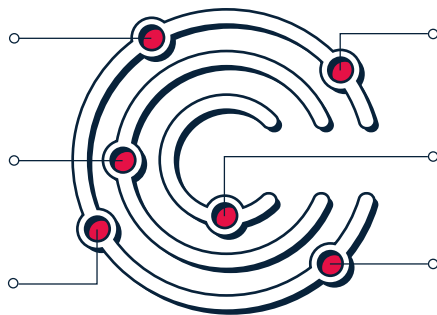
Visit www.sthelens.ac.uk/music for more information

Connecting Classroom to Career

Music Therapist
£33k - £47k

Recording Artist
£12k - £100k+

Event Manager
£18k - £40k



Radio Producer
£21k - £45k

Music Promotions Manager
£24k - £65k

Live Sound Engineer
£25k - £40k

*Salary data collected from various sources, see page 106 for details, July 2023

Industry Links



Work Placement
You will take part in an exciting work placement during your course!

Student Spotlight

Eric

Inspiring
DJ Producer

"Throughout my course, I was able to develop valuable connections to industry professionals and received an abundance of support from the tutors. I have been featured on radio stations in the UK, USA, and Australia, including Liverpool radio station, In Demand Radio."

Classroom
Level 3 Extended Diploma

Joined us from
De La Salle School



Course Title	Entry Requirements	Progression
Level 3 Extended Diploma	5 GCSEs at grade 4 (including English and maths)	University or Employment
Level 2 First Extended Certificate	2 GCSEs at grade 4 and 2 GCSEs at grade 3	Level 3 or Employment

Student Experience

You'll have access to the latest industry equipment including Rode/Shure/AKG/Cascade/Neumann mics, MOTU audio interfaces, Allen and Heath mixers, Roland drums and HK Audio PA Systems.



Former student, Josh Butler, returned to College to inspire and collaborate with our music students. Josh has released music with prestigious record labels such as Roush, Madtech, Noir and more and has completed multiple European, US and Australian tours including Ibiza residencies and even performed a set at Glastonbury!



Performing Arts

Based in our bespoke theatre, studios and workshops, you will be taught by professional actors and choreographers, whilst developing your performance and technical ability, such as vocal skills, dance skills, physical theatre and TV acting and scriptwriting.

We are an approved centre for University of the Arts London (UAL) Awarding Body, who design and award creative qualifications that empower and inspire educators to help students reach their potential.

During your course, you will have access to the most incredible learning environment including professional masterclasses and workshops, and inspirational guest speakers.



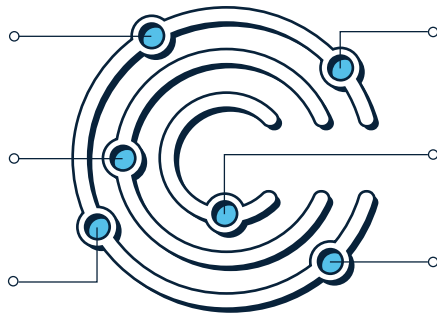
Visit www.sthelens.ac.uk/performingarts for more information

Connecting Classroom to Career

Stage Manager
£22k - £48k

Drama Teacher
£28k - £43k

Actor/Actress
£15k - £100k+



Live Sound Engineer
£25k - £40k

Musical Theatre Director
£22k - £48k+

Music Therapist
£33k - £37k

*Salary data collected from various sources, see page 106 for details, July 2023

Industry Links

ual: awarding body



Work Placement
You will take part in an exciting work placement during your course!

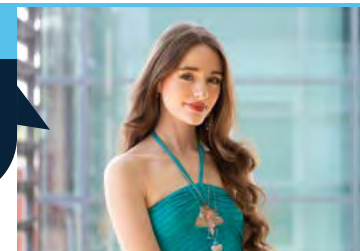
Student Spotlight Madeline

Aspiring Actress

"Completing the clowning and miming module was the highlight of my course. It brought me out of my comfort zone and allowed me to grow so much as a person and performer. I am much more confident in myself since joining the College."

Classroom
Level 3 Extended Diploma

Joined us from
De La Salle School



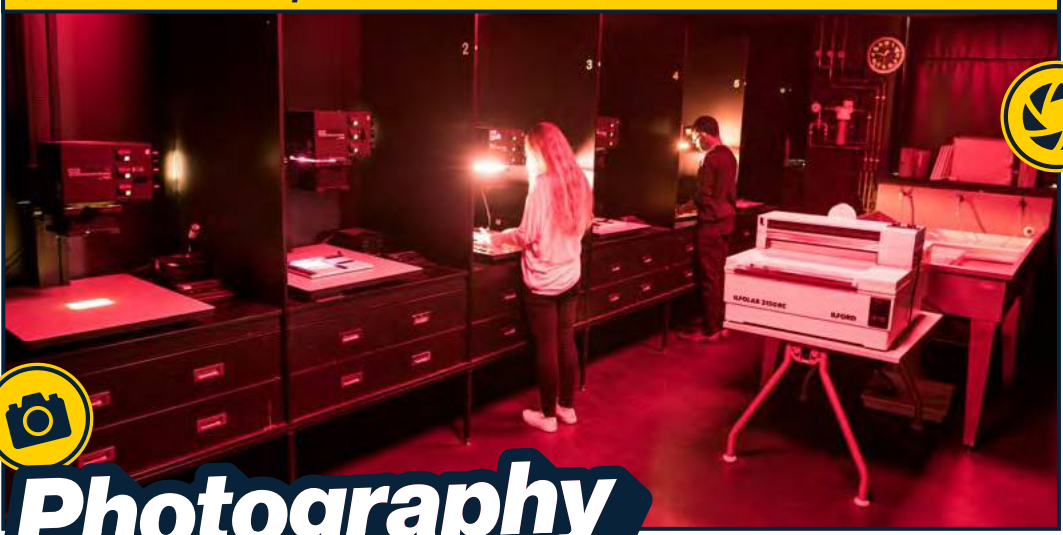
Course Title	Entry Requirements	Progression
Level 3 Extended Diploma	3 GCSEs at grade 4 or above or level 2 qualification	University or Employment
Level 2 Diploma	No formal qualifications, just passion and commitment to your studies	Level 3 or Employment

Student Experience



In partnership with Shakespeare North Playhouse, we provide unique opportunities for our students to experience the venue as creative professionals. Students received audition tips from Shakespeare North's Senior Producer and took part in a writing and performance workshop with their Spoken Word Producer. They even got the chance to practice their monologues centre stage!





Photography

From the creative imagery used by advertising photographers in magazines, to the compelling world of editorial photography, the camera's ability to record the world around us creates an unlimited number of career opportunities in the industry.

Exploring all aspects of the art, there will be plenty of opportunities to visit regional museums and galleries, along with the opportunity to shoot your own work.

You will work on competition briefs and personal projects whilst collaborating on live projects with professional clients.



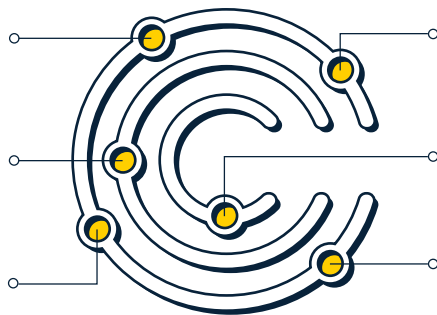
Visit www.sthelens.ac.uk/photography for more information

Connecting Classroom to Career

Photographer
£17k - £45k

Gallery Curator
£18k - £35k

Graphic Designer
£18k - £38k



Advertising Art Director
£18k - £45k

Medical Illustrator
£25k - £39k

Photographic Technician
£18k - £29k

*Salary data collected from various sources, see page 106 for details, July 2023

Industry Links



Education Partner

Work Placement
You will take part in an exciting work placement during your course!

Student Spotlight Alex

Aspiring Graphic Designer

"We had lots of creative freedom to work on projects that meant something to us. I focused on advertising - something I now feel confident enough to pursue as a career, designing marketing campaigns for brands."

Classroom
Level 3 Extended Diploma

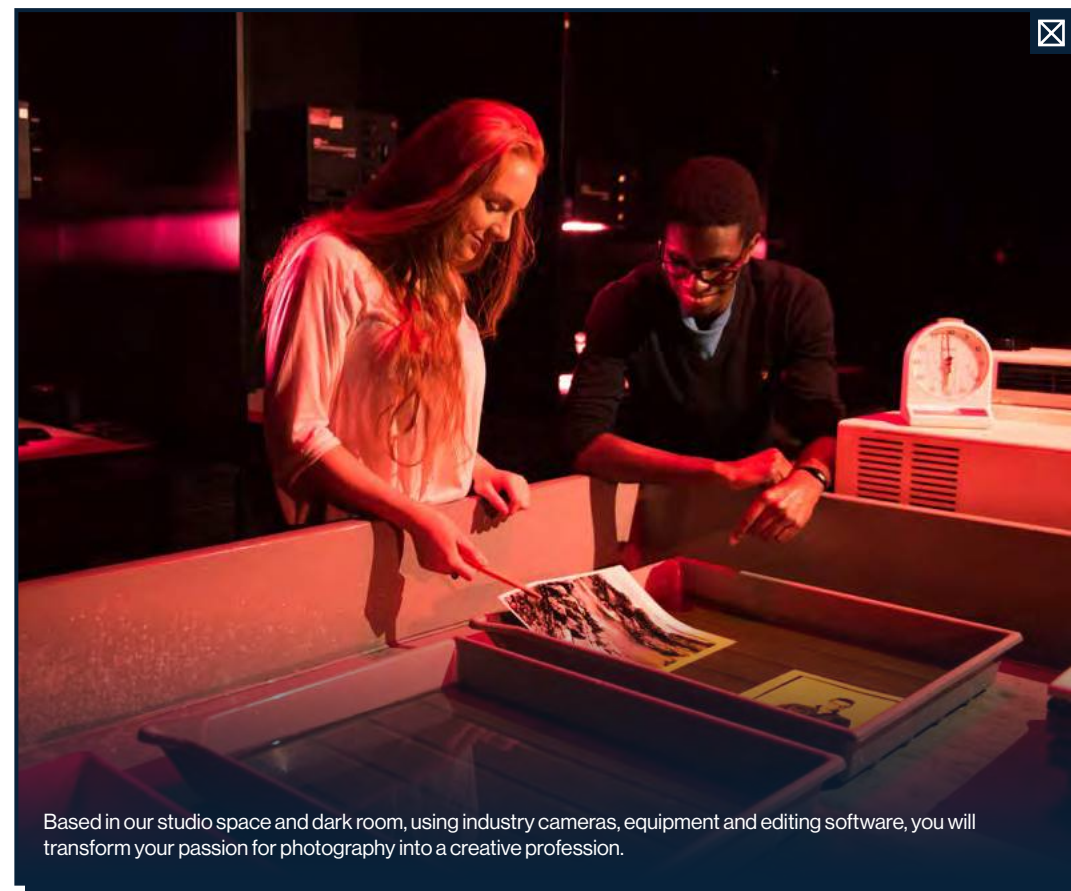
Joined us from
The Prescott School



Course Title	Entry Requirements	Progression
Level 3 Extended Diploma	4 GCSEs at grade 4 or above (including English and/or maths, and an art related subject)	University or Employment

Student Experience

Students visited the Manchester Art Gallery to gain inspiration for their future projects, before discovering shoot locations in hidden corners of Manchester. They were even lucky enough to use some flowers left by a wedding party in their photography.



Based in our studio space and dark room, using industry cameras, equipment and editing software, you will transform your passion for photography into a creative profession.



Public and Uniformed Services

This industry plays a vital role in the welfare and also the safety of people here in the UK and abroad, whether on the front-line, or behind the scenes. This means there are so many career opportunities for you to make a real difference at a local, national or international level!

While exploring different aspects of your physical fitness, you will have the opportunity to participate in competitive sports or adventurous activities, undertake voluntary experience and understand service routine.

Whether you choose to secure employment or progress on to university first, our tutors prepare you mentally and physically whilst developing your independence and resilience.



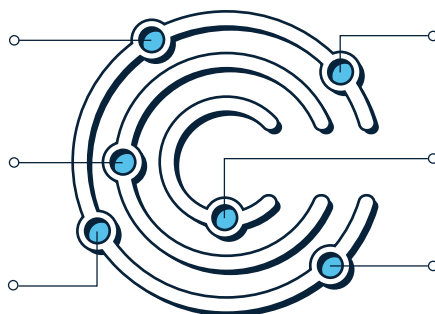
Visit www.sthelens.ac.uk/pservices for more information

Connecting Classroom to Career

Civil Service Manager
£27k - £68k

Police Officer
£19k - £41k

Royal Marines Officer
£27k - £39k



Border Force Officer
£21k - £31k

Firefighter
£24k - £32k

Merchant Navy Officer
£25k - £40k

*Salary data collected from various sources, see page 106 for details, July 2023

Industry Links



Work Placement
You will take part in an exciting work placement during your course!

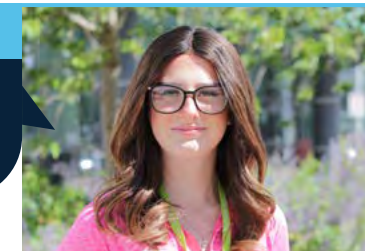
Student Spotlight Grace

Aspiring Military Intelligence Operative

"My tutors have amazing knowledge and experience. They support you to find a career that you'll enjoy and succeed at. The physical aspect of the course has been challenging but I have learnt so much about my own strength and endurance."

Classroom
Level 3 Extended Diploma

Joined us from
De La Salle School



Course Title	Entry Requirements	Progression
Level 3 Extended Diploma	5 GCSEs at grade 4 or above (including English and maths)	University or Employment
Level 2 Diploma	4 GCSEs at grade 3 or above (including English and maths)	Level 3 or Employment
Level 1 Diploma	2 or more GCSEs at grade 2 or above (including English or maths)	Level 2

Student Experience

Climbing Snowdon

Students put their teamwork and endurance skills to the test as they scaled the summit of Snowdon, the highest mountain in Wales! After an exhilarating four-and-a-half-hour ascent, the group reached the summit, withstanding temperatures of -5 degrees.



Fleetwood Nautical Campus

Students explored the incredible training facilities at Fleetwood Nautical Campus in Blackpool, the UK's top nautical establishment!

They took part in real-life training scenarios, using their deck simulator to learn how to control a vessel at sea during difficult weather conditions, as well as fire rescue, sea survival and emergency drill training to know how to correctly evacuate a vessel in an emergency situation.



Science

Working in our fully equipped laboratories, you will explore the realms of science as you investigate genetics, human anatomy, physiology and pharmacology.

You will develop valuable practical skills and analytical thinking, and enhance your knowledge of scientific theory to equip you for higher education and employment within the science sector.

Studying science can lead to many exciting career opportunities within fields such as biomedical science, microbiology, forensic science and even nutrition or teaching!



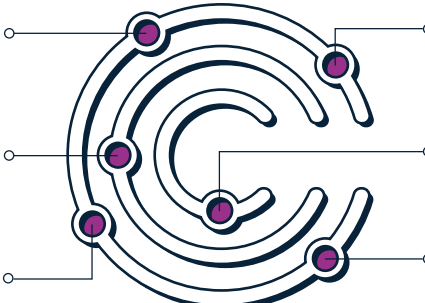
Visit www.sthelens.ac.uk/science for more information

Connecting Classroom to Career

Laboratory Technician
£17k - £30k+

Food Scientist
£20k - £45k+

Microbiologist
£19k - £44k



Biomedical Scientist
£25k - £45k+

Exercise Physiologist
£20k - £48k

Nutritionist
£27k - £40k

*Salary data collected from various sources, see page 106 for details, July 2023

Industry Links



Work Placement
You will take part in an exciting work placement during your course!

Course Title	Entry Requirements	Progression
Level 3 Extended Diploma	4 GCSEs at grade 4 or above (including English, maths and science)	University, Apprenticeship or Employment
Level 2 First Extended Certificate	No formal qualifications, just passion and commitment to your studies	Level 3, Apprenticeship or Employment
GCSE Skills for Progression to Further Education (English, Maths and Science)	No formal qualifications, just passion and commitment to your studies	Level 2



Student Experience



Students took part in interactive workshops at our annual Healthcare Science Skills Show with a number of organisations, including St Helens and Whiston Hospitals, Alder Hey, Liverpool Heart and Chest Hospital and Medical Mavericks. The event gave them a first-hand insight into the healthcare and science sector and the many career opportunities available in the industry.



Are you interested in completing an apprenticeship?
See page 34 for more information.



Sport and Fitness

Training in our exercise studio, gym and outdoor facilities, you will learn the theory and practice behind sport, exercise, health and fitness.

You will learn everything there is to know about sports development, athlete lifestyles, anatomy and physiology, fitness training and sports massage.

Whether you want to become a fitness instructor, personal trainer, community sports coach or PE teacher, this is the first step towards an exciting career.



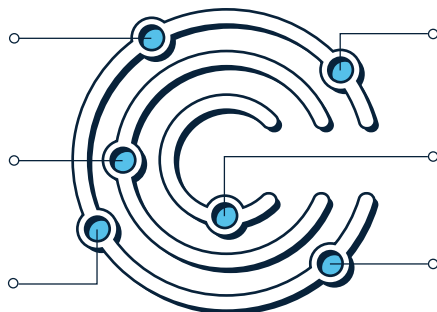
Visit www.sthelens.ac.uk/sport for more information

Connecting Classroom to Career

Nutritionist
£27k - £40k

Sports Physiotherapist
£24k - £45k

Performance Sports Scientist
£20k - £60k



Exercise Physiologist
£20k - £48k

Fitness Instructor
£14k - £25k

Sports Commentator
£13k - £80k

*Salary data collected from various sources, see page 106 for details, July 2023

Industry Links



Work Placement
You will take part in an exciting work placement during your course!

Student Spotlight

Ellie

Aspiring Physiotherapist

"My tutors are really passionate about helping me to succeed and their support extends so much further than just the classroom. With their encouragement, I have been selected to represent West Lancashire Women's Cricket Team in Barbados later this year."

Classroom
Level 3 Extended Diploma

Joined us from
Outwood Academy Haydock



Course Title	Entry Requirements	Progression
Level 3 Extended Diploma	4 GCSEs at grade 4 or above (including English and maths)	University or Employment
Level 2 Certificate/Diploma Sport	4 GCSEs at grade 3 or above (including English and/or maths)	Level 3 or Employment
Level 2 Certificate Gym Instructing	4 GCSEs at grade 3 or above (including English and/or maths)	Level 3 or Employment
Level 1 Certificate	No formal qualifications, just passion and commitment to your studies	Level 2

Student Experience

Former Sport student, Conor, returned to College to share his industry experience with our students, including his coaching career, which has taken him overseas to America and Canada. He now runs football coaching business, EF92 Academy.





Travel and Tourism

Airport operations, cabin crew and holiday representatives play an important role in the delivery of the customer experience, so you will learn all about different cultures and customs to provide a first-class experience.

From work experience, familiarisation flights and water survival training to meeting big employers like Jet2.com, your course is enriched with lots of trips and activities to prepare you for an exciting career within an airport or onboard an aircraft.

Many students have progressed on to university, while others have secured employment with the world's top airlines, airports and tourism companies.



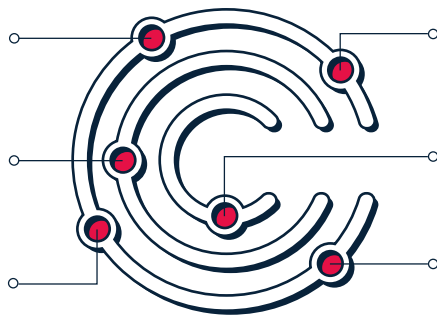
Visit www.sthelens.ac.uk/travel for more information

Connecting Classroom to Career

Cabin Crew
£15k - £30k+

Marketing Executive
£20k - £50k+

Events Manager
£21k - £40k+



Travel Agency Manager
£20k - £40k

Airline Customer Service Agent
£15k - £25k

Hotel Manager
£20k - £60k

*Salary data collected from various sources, see page 106 for details, July 2023

Industry Links

Jet2.com

eurocamp

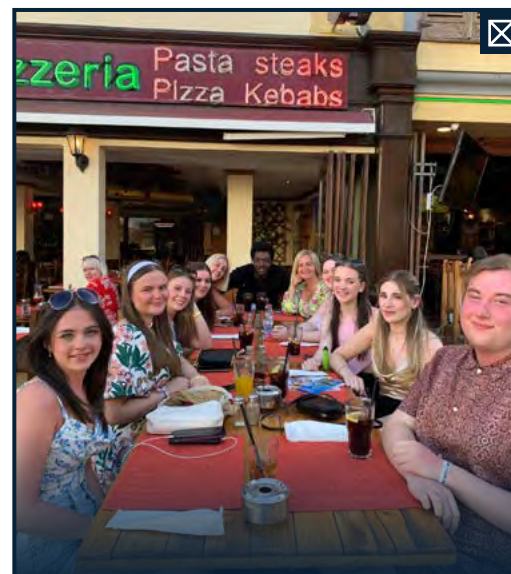
Work Placement
You will take part in an exciting work placement during your course!



Students completed water survival training at Fleetwood Nautical Campus, where they practised water survival techniques and evacuation procedures. They even completed a simulated helicopter rescue!

Student Experience

Cabin Crew students flew to Tenerife with one of the largest airlines in the UK, Jet2.com. Working alongside Jet2 Cabin Crew, the students assisted with in-flight duties including serving passengers!



Students headed overseas to visit Albufeira in the Algarve to explore the country's culture and tourism industry. They experienced the Old Town of Albufeira, took a boat trip to visit the Benagil Cave in Carvoeiro and explored Vilamoura.



Students attended Manchester Airport's Jobs Fair, where they explored job opportunities from across the sector, including roles at the airport and a number of airlines.

The students also networked with industry professionals from a range of companies, including Swissport International, Travelex, Jet2.com and Jet2holidays and TUI.

Course Title	Entry Requirements	Progression
Level 3 Extended Diploma (Travel and Tourism)	5 GCSEs at grade 4 (including English and maths)	University or Employment
or		
Level 3 Diploma (Aviation Operations)	5 GCSEs at grade 4 or above (including English and maths)	University or Employment
⬆		
Level 2 Diploma (Aviation Environment)	2 GCSEs at grade 3 or above and 2 GCSEs at grade 4 or above	Level 3 or Employment
or		
Level 2 Diploma (Air Cabin Crew)	4 or more GCSEs at grade 3 (including English or maths) You will need to be 18 upon completion of this course	Employment
or		
Level 2 Diploma (Travel and Tourism)	4 GCSEs at grade 3 or above, and two GCSEs at grade 4 or above in English and maths	Level 3 Extended Diploma or Employment
⬆		
Level 1 Diploma (Travel and Tourism)	No formal qualifications, just passion and commitment to your studies	Level 2

Student Spotlight

Matt

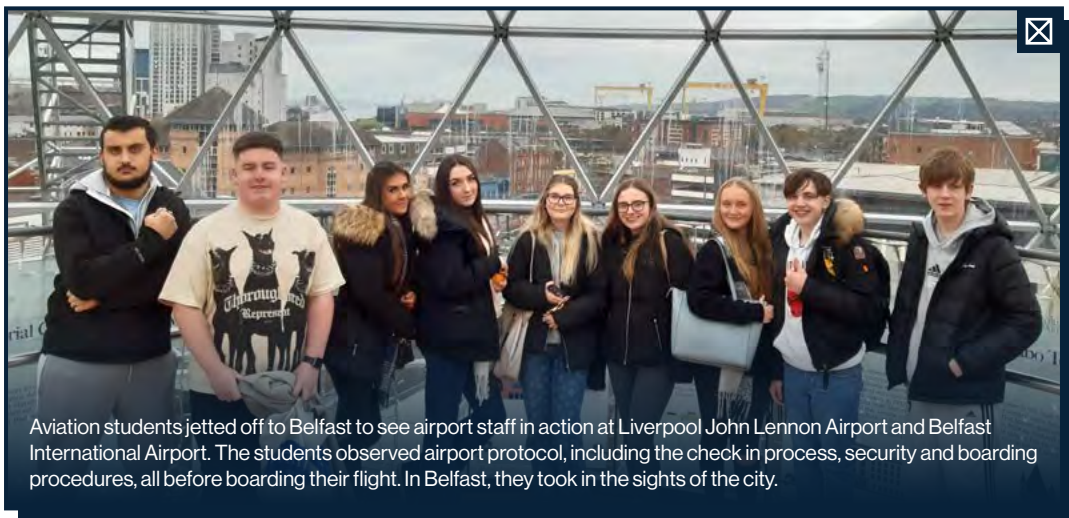
*Inspiring
Cabin Crew*

"I love being Cabin Crew! Every day is different - travelling around the world visiting the most amazing places! My course equipped me with the skills and knowledge I needed to prepare me for the intense training with British Airways."



Classroom
Level 2 Diploma in Air Cabin Crew

Joined us from
St John Fisher Catholic High School



Aviation students jetted off to Belfast to see airport staff in action at Liverpool John Lennon Airport and Belfast International Airport. The students observed airport protocol, including the check in process, security and boarding procedures, all before boarding their flight. In Belfast, they took in the sights of the city.

★ **Sophie**



Sophie

"The passion the tutors have for the travel industry made my experience at College much more enjoyable. They really are experts within their field! I have gained so much knowledge of the industry, which has opened lots of opportunities for me to explore once I complete my degree in Tourism Management."

Classroom: Level 3 Extended Diploma in
Travel and Tourism

University: Tourism Management at
Liverpool Hope University

Joined us from: Wade Deacon High School

Next STEPS

So now it's all about you. After looking through this prospectus, you should start to get some kind of idea about what you would like to do once you have finished your GCSEs.

We have lots of events taking place so that you can explore your subject interests, chat to tutors and make your final decision.

Find out what comes next and the steps that you need to take in order to secure your place at St Helens College.

1

Open Event

Our students often say to us that they found an Open Event incredibly helpful. So take their advice and explore student life at St Helens College. www.sthelens.ac.uk/openevents



2

Time to Choose

Once you've had a look through this prospectus and experienced an Open Event, you should have an idea of what you want to study. If you are not sure, don't worry, we will provide lots of support to help you make your decision.



3

Submit Your Application

Now it's time to complete your application. Once you've applied, our Admissions Team will be in touch to discuss the next steps to secure your place. www.sthelens.ac.uk/apply



4

Interview

Once you have submitted your application form, you will then need to attend an interview. You will meet your tutors, find out more about what you want to study and secure your place ready for September.



5

Experience Day

Take part in Experience Day. You will have the opportunity to make new friends on your course, get involved in fun activities in your subject choice and find out about the kit and equipment you may need.



6

Enrol With Us

Once you have collected your GCSE results, come into College to enrol on your course and pick up any other information you might need such as financial support or help with your English and maths.



This prospectus has been produced as a guide and was correct at the time of going to print. St Helens College reserves the right to amend, remove and add courses in the future. We also reserve the right to amend course entry criteria. This prospectus cannot be considered contractual and we accept no liability for inaccurate statements. Careers information was correct at the time of going to print. Information from National Careers Service, Labour Market Information (LMI), Liverpool Enterprise Partnership and Prospects.

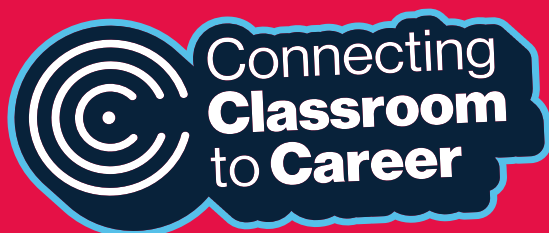


St Helens College

0800 99 66 99

enquire@sthelens.ac.uk

[🎵](#) [f](#) [@](#) [X](#) /sthelenscollege



www.sthelens.ac.uk